

References

Composite image incorporates openly licensed images from Pixabay, Pexels and Unsplash.

External assessment 2021

Stimulus book

Design

General instruction

- Work in this book will not be marked.



© State of Queensland (QCAA) 2021

Licence: <https://creativecommons.org/licenses/by/4.0> | Copyright notice: www.qcaa.qld.edu.au/copyright — lists the full terms and conditions, which specify certain exceptions to the licence.

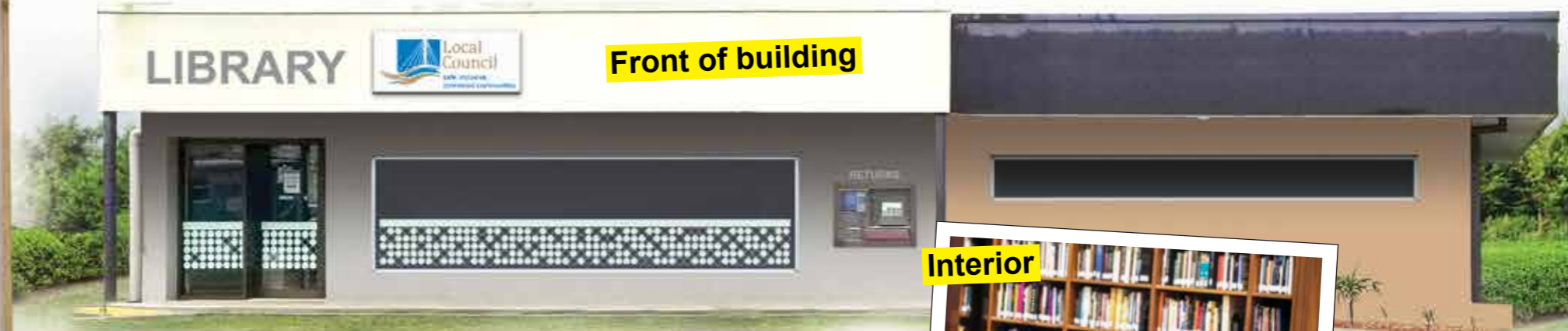
Attribution: © State of Queensland (QCAA) 2021

Design problem

The use of a community library has reduced as people increasingly access books and media online. At some point this traditional library will become obsolete and the building risks being demolished. To ensure the existing building structure is maintained, adult community members who don't use the library have been consulted. Circular design methods must be used to redesign the library space to suit their needs and wants.

Design criteria

- Enable a broader range of uses of the building to suit the adult community members.
- Improve the aesthetic of the space for the adult community members.
- Ensure the design discourages obsolescence to maintain the sustainability of the building.



Front of building



Interior



Adult community members stated:

👍 'I would use the library if it allowed me to ...'

😞 'I don't go to the library because ...'

❤️ 'A space I would feel comfortable in would have ...'



👍 conduct a meeting

😞 I don't have privacy and it's dark and musty

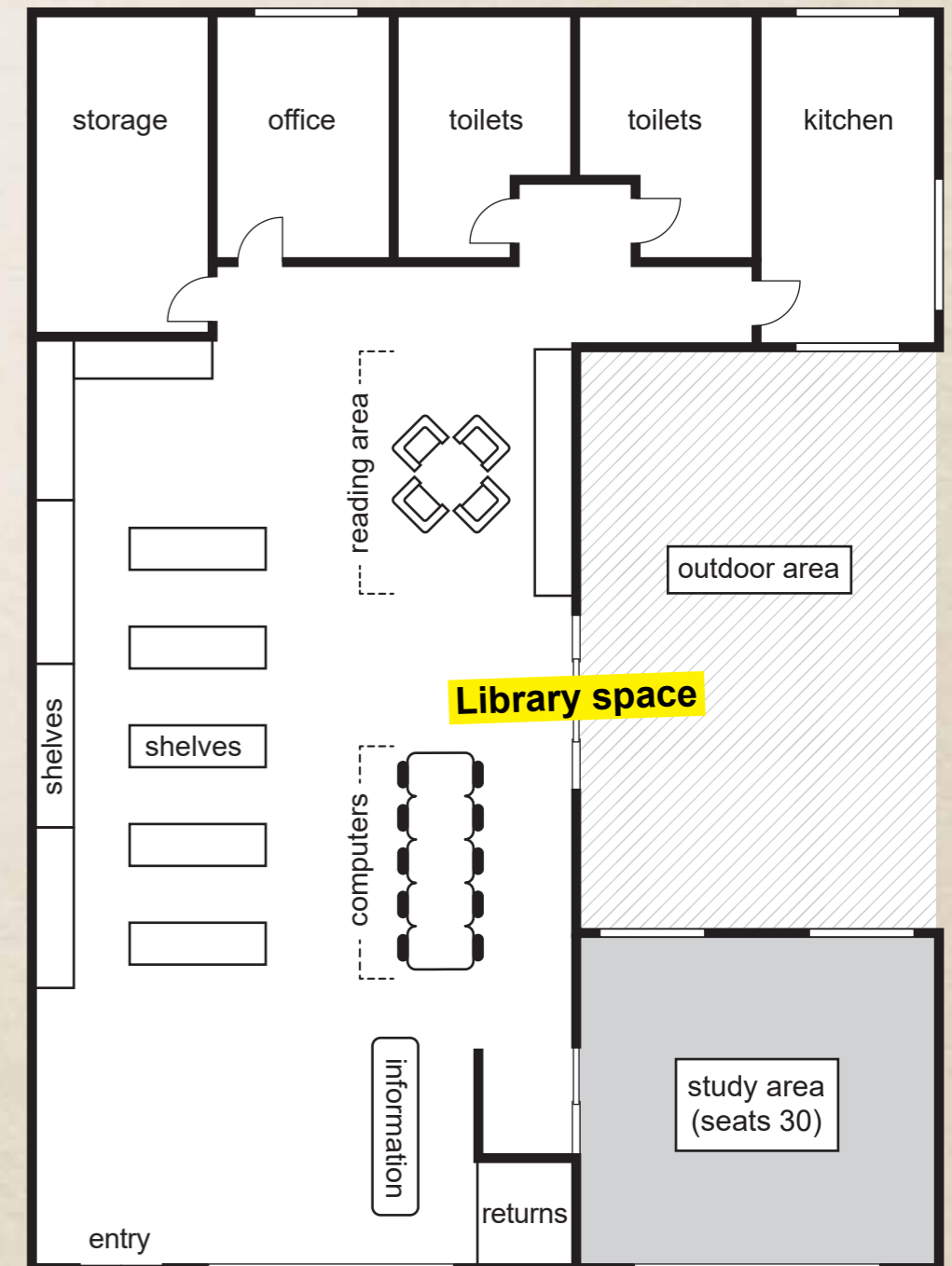
❤️ areas influenced by modernism, with forms that follow functions



👍 stay fit

😞 it primarily caters for older people and children

❤️ adaptability for different purposes



👍 host events

😞 I can't make noise or eat and drink

❤️ colourful, bright and airy spaces



👍 play online games

😞 I don't feel welcome; looks like a bunker

❤️ areas to hang out with my friends



👍 create art

😞 it's dated — brown and cream

❤️ a connection to nature