

External assessment 2025

Multiple choice question book

# Psychology

## Paper 1

### General instruction

- Work in this book will not be marked.

## Section 1

### Instruction

- Respond to these questions in the question and response book.
- 

### QUESTION 1

What is glutamate's effect on neurotransmission?

- (A) It makes an action potential less likely.
- (B) It makes an action potential more likely.
- (C) It causes the inhibition of neurons in the brain only.
- (D) It causes the excitation of neurons in the brain only.

### QUESTION 2

Which statement describes the process by which 'Little Albert' learnt a fear response in Watson & Rayner's 1920 experiment?

- (A) Each time Albert touched the fur coat, a steel bar was struck, creating a startling noise.
- (B) Each time Albert touched the rat, a steel bar was struck, creating a startling noise.
- (C) Each time Albert struck the steel bar, he was presented with a fur coat.
- (D) Each time Albert struck the steel bar, he was presented with a rat.

### QUESTION 3

Which option correctly distinguishes between negative and positive reinforcement?

	Negative reinforcement	Positive reinforcement
(A)	removes a rewarding stimulus	presents an aversive stimulus
(B)	reinforces negative behaviours	reinforces positive behaviours
(C)	removes an aversive stimulus	presents a rewarding stimulus
(D)	punishes undesired behaviours	rewards desired behaviours

## THIS PAGE WILL NOT BE MARKED

### QUESTION 4

In an operant conditioning study, a pigeon was trained to peck a button whenever it heard a whistle. Over time, it began to peck the button when it heard a car horn as well. This is an example of

- (A) extinction.
- (B) spontaneous recovery.
- (C) stimulus generalisation.
- (D) stimulus discrimination.

### QUESTION 5

Playing sport with siblings teaches a young child the principles of fair play. This is regarded as

- (A) secondary socialisation, because sport is in the media.
- (B) secondary socialisation, because it does not involve parents.
- (C) primary socialisation, because it involves learning through direct experience.
- (D) primary socialisation, because it involves a young child learning from close family members.

### QUESTION 6

Damage to Broca's area can result in Broca aphasia.

Which option is a key feature of this condition?

- (A) producing agrammatical but meaningful speech
- (B) difficulty comprehending spoken language
- (C) difficulty comprehending written language
- (D) producing fluent but meaningless speech

## **THIS PAGE WILL NOT BE MARKED**

### **QUESTIONS 7–8**

Questions 7–8 refer to Buss et al.'s 1990 study, which found support for biological theories of attraction.

#### **QUESTION 7**

The study found that

- (A) females assign greater importance to health than males.
- (B) females assign lower importance to good earning capacity than males.
- (C) males assign lower importance to physical attractiveness than females.
- (D) males assign greater importance to physical attractiveness than females.

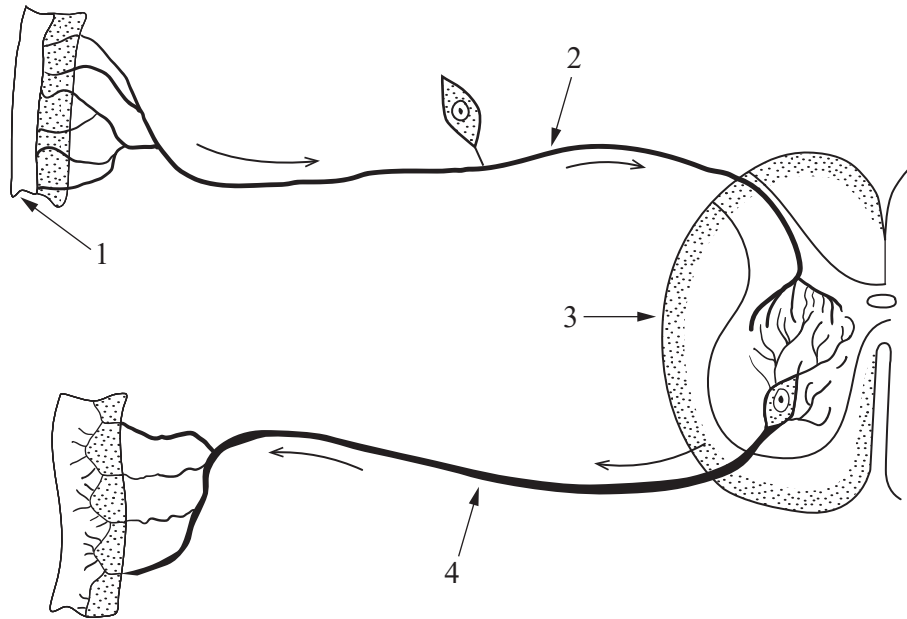
#### **QUESTION 8**

Biological theories were supported by the study's findings of

- (A) consistent sex differences across cultures.
- (B) different views of evolution across cultures.
- (C) a unique order of preferences for each culture.
- (D) differences between cultures in the value placed on chastity.

**QUESTION 9**

The diagram illustrates the spinal reflex.



The sensory neuron is labelled

- (A) 4
- (B) 3
- (C) 2
- (D) 1

**QUESTION 10**

When drawing a straight road from the perspective of a car driver, the lines representing the road converge as the road becomes more distant.

Which visual perception principle is relevant to perceiving depth like this?

- (A) the principle of closure
- (B) linear perspective
- (C) size constancy
- (D) interposition

**THIS PAGE WILL NOT BE MARKED**

**QUESTION 11**

After suffering a brain injury, a person has difficulty learning new motor skills.

Which part of the brain was most likely injured?

- (A) hypothalamus
- (B) cerebellum
- (C) amygdala
- (D) cerebrum

**QUESTION 12**

What is the role of the basal ganglia in voluntary movement?

- (A) channelling information to the primary motor cortex and blocking unwanted movements
- (B) coordinating stored sequences to produce smooth movement
- (C) initiating neural signals that tell skeletal muscles to move
- (D) storing sequences of previously learnt movements

**QUESTION 13**

Which option correctly describes the functions of acetylcholine and serotonin?

	<b>Acetylcholine</b>	<b>Serotonin</b>
(A)	stimulates muscle contraction	regulates mood
(B)	decreases heart rate	increases heart rate
(C)	increases heart rate	decreases heart rate
(D)	regulates mood	stimulates muscle contraction

**THIS PAGE WILL NOT BE MARKED**

**QUESTION 14**

A class of students were taught a list of words, then divided into three groups.

- Group 1 was asked to retrieve the words in the order they were learnt.
- Group 2 was given a list of words that included the learnt words and new words. They had to identify which words came from the learnt list.
- Group 3 was given the initial letters of the learnt words and asked to complete the list.

Which option correctly distinguishes between the methods of memory retrieval?

	<b>Group 1</b>	<b>Group 2</b>	<b>Group 3</b>
(A)	serial recall	cued recall	recognition
(B)	cued recall	serial recall	recognition
(C)	recognition	cued recall	serial recall
(D)	serial recall	recognition	cued recall

**QUESTION 15**

Which option is a feature of cognitive-developmental theories of gender role formation?

- (A) seeing others punished for gender-inappropriate behaviours
- (B) imitating behaviours displayed by same-gender parents
- (C) hormonal influences on physical development
- (D) developing mental schemas about gender

**QUESTION 16**

Researchers conducted an investigation inspired by Haney, Banks & Zimbardo (1973). They randomly assigned participants to be guards or prisoners in a mock prison. They found that the guards hit the prison bars to wake the prisoners, yelled at prisoners until they cried and made the prisoners sing for permission to use the toilet. The researchers also found that prisoners sometimes refused to recite their prisoner numbers when the guards demanded.

Which deduction is supported by the details in the scenario?

- (A) The guards had unlimited power.
- (B) The prisoners had unlimited power.
- (C) The guards' power was considerable but limited.
- (D) Prisoners and guards had equal power as participants in the same experiment.

## THIS PAGE WILL NOT BE MARKED

### QUESTION 17

During a social football game, a player was visibly injured in a collision with a second player, who showed no concern for the injured player. Following this, no other players stopped to help but instead continued to play around the injured player.

Which statement best explains the other players' behaviour in this scenario?

- (A) They were influenced by the initial lack of concern shown by the second player involved in the collision.
- (B) They considered the cost of helping to be greater than the benefit.
- (C) They did not notice that the injured player needed help.
- (D) They did not feel competent to help the injured player.

### QUESTION 18

In terms of the tri-component model of attitudes, which option describes the sexist stereotype, 'Males are better drivers than females'?

	<b>Believing that males have better spatial ability</b>	<b>Feeling more confident about male instructors</b>	<b>Hiring more male instructors</b>
(A)	cognitive	behavioural	affective
(B)	affective	cognitive	behavioural
(C)	cognitive	affective	behavioural
(D)	behavioural	affective	cognitive

### QUESTION 19

In psychology, *culture* is regarded as

- (A) a sense of belonging to a group or society.
- (B) a fixed system of rules that is unique to specific groups of people.
- (C) a group of people who live in close proximity and share common characteristics.
- (D) the values, beliefs and rules of behaviour in a society that influence how people think and behave.

**THIS PAGE WILL NOT BE MARKED**

**QUESTION 20**

Which option correctly contrasts confirmation bias and self-serving bias?

	<b>Confirmation bias</b>	<b>Self-serving bias</b>
(A)	seeking or interpreting information in such a way that it supports your beliefs	over-attributing your successes and failures to factors that present you in a favourable light
(B)	over-attributing the behaviour of others to situational factors	over-attributing the behaviour of others to dispositional factors
(C)	over-attributing your successes to personal characteristics	seeking or interpreting information in such a way that it supports your beliefs
(D)	interpreting the behaviour of others in a way that confirms your view of them	interpreting the behaviour of others in a way that presents you in a favourable light

**THIS PAGE IS INTENTIONALLY BLANK**

**THIS PAGE IS INTENTIONALLY BLANK**

## References

### Questions 7 & 8

Buss, DM et al. 1990, 'International preferences in selecting mates: A study in 37 cultures', *Journal of Cross-Cultural Psychology*, vol. 21, no. 1, pp. 5–47.

### Question 9

Adapted from Pearson Scott Foresman Archives 2007, 'Afferent', *Wikimedia*, <https://picryl.com/media/afferent-psf-338b5b>.



© State of Queensland (QCAA) 2025

Licence: <https://creativecommons.org/licenses/by/4.0> | Copyright notice: [www.qcaa.qld.edu.au/copyright](http://www.qcaa.qld.edu.au/copyright) — lists the full terms and conditions, which specify certain exceptions to the licence. Third-party materials referenced above are excluded from this licence. | Attribution: © State of Queensland (QCAA) 2025