

## References

### Stimulus 1

United Nations Operational Data Portal (2023), 'Refugees, returnees and internally displaced persons in the IGAD region' <https://data.unhcr.org/en/documents/details/98363>

de Rooij, L. L., & Stuiver, M. (2020). Circular Refugee Camps: Co-creating meaningful business. (Wageningen Environmental Research report; No. 3001). Wageningen Environmental Research. <https://doi.org/10.18174/513651>

### Stimulus 2

Adapted from Figure 5 in Ssentongo, B., Egeru, A., & Barasa, B. (2024). Refugee settlement induces accelerated land use/cover change in Northern Uganda. *Annals of GIS*, 30(1), 137–149. <https://doi.org/10.1080/19475683.2024.2304696>

### Stimulus 4

Data source: United Nations Operational Data Portal (2018) 'Multi-Sector Needs Assessment; Yumbe District, Uganda, August 2018' <https://data.unhcr.org/en/documents/details/65837>

### Stimulus 5

Data source: United Nations Operational Data Portal (2023), 'FAO - Forest Landscape Management Plan for the BidiBidi Refugee Settlement, Uganda: 2023–2028' <https://data.unhcr.org/en/documents/details/102097>,

### Stimulus 6

Data based on UNHCR Operational Data Portal (ODP) *Multi-Sector Needs Assessment: Yumbe District Uganda* <https://data.unhcr.org/en/documents/details/65900>

### Stimulus 7

Data based on UNHCR Operational Data Portal (ODP) *Refugee Access to Livelihoods and Housing, Land, and Property*, <https://data.unhcr.org/en/documents/details/71919>

### Stimulus 8

FAO. 2023. *Forest Landscape Management Plan for the BidiBidi Refugee Settlement, Yumbe District, Uganda: 2023–2028*. Kampala. <https://doi.org/10.4060/cc6197en>

Data and information provided in this paper may have been developed or adjusted for exam purposes and should not be taken as factual.



© State of Queensland (QCAA) 2025

Licence: <https://creativecommons.org/licenses/by/4.0> | Copyright notice: [www.qcaa.qld.edu.au/copyright](http://www.qcaa.qld.edu.au/copyright) — lists the full terms and conditions, which specify certain exceptions to the licence. Third-party materials referenced above are excluded from this licence. | Attribution: © State of Queensland (QCAA) 2025

External assessment 2025

Stimulus book

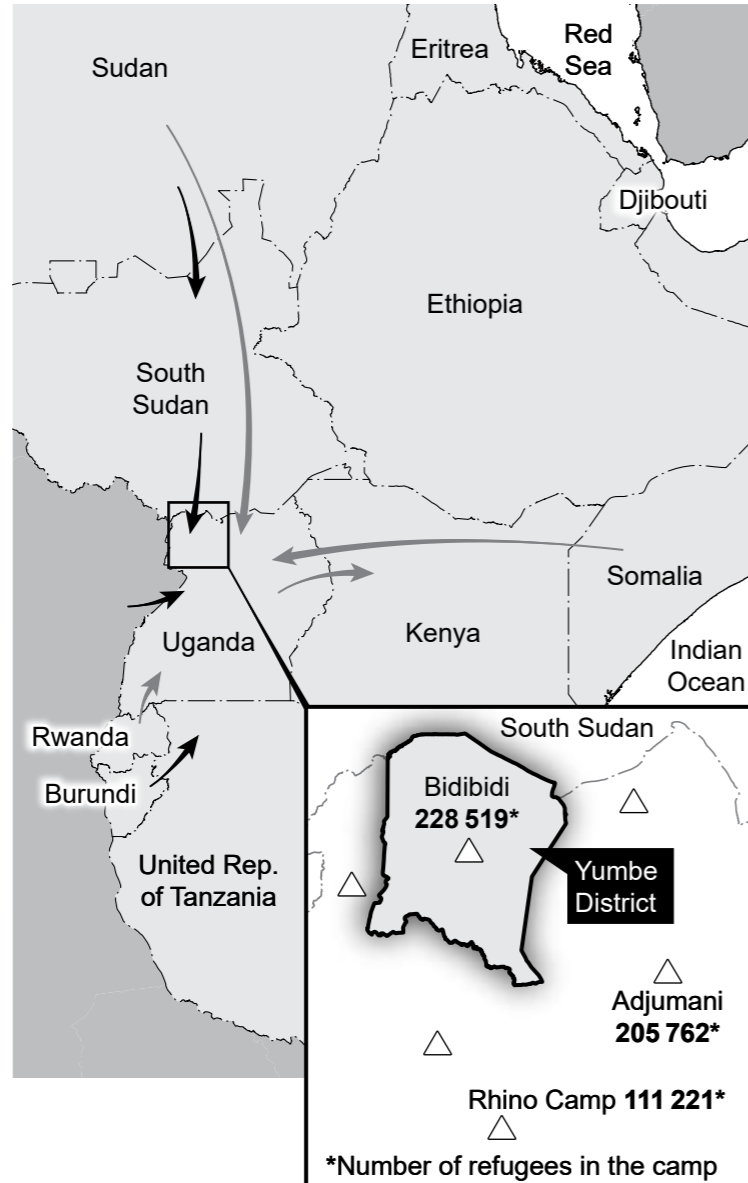
# Geography

## General instruction

- Work in this book will not be marked.

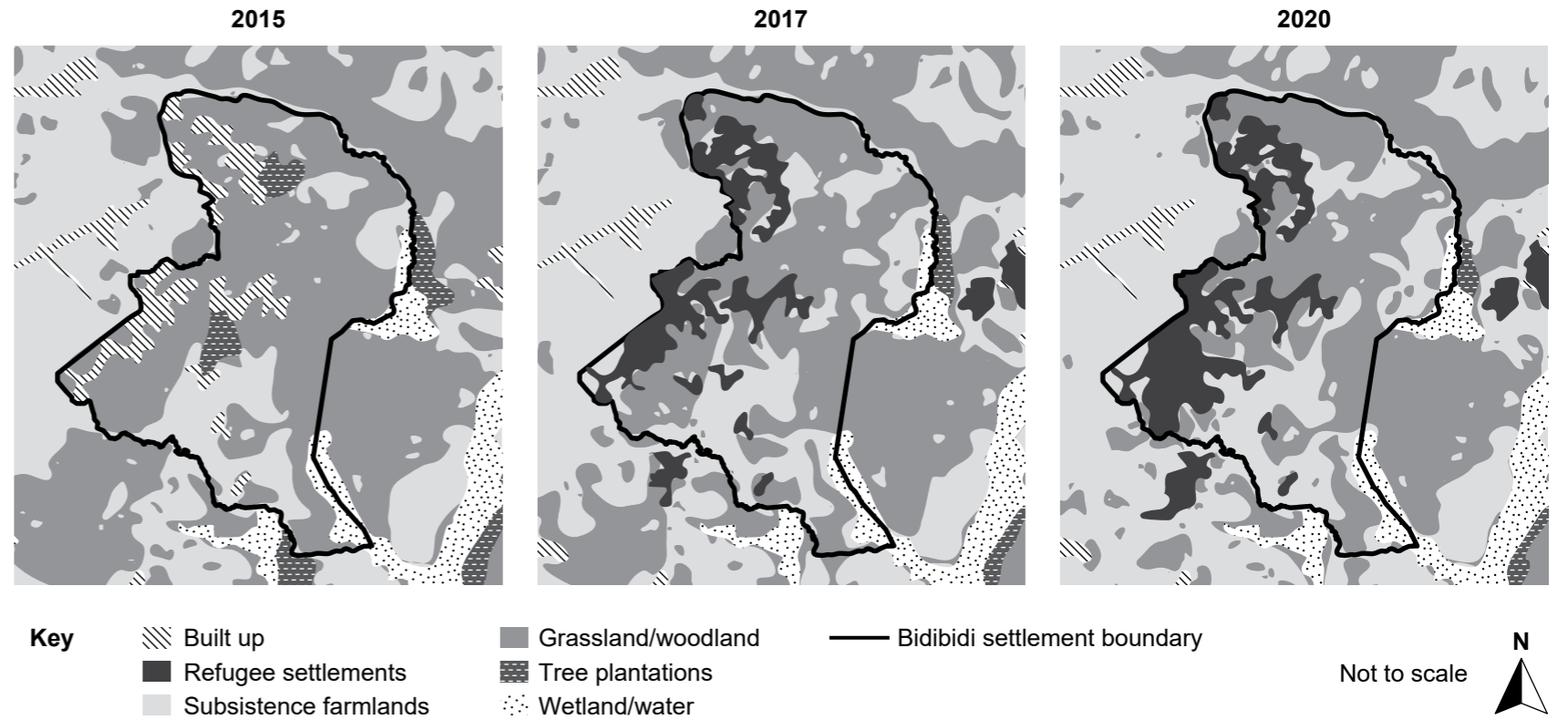
**Stimulus 1: Refugee flows, East Africa, 2023**

| Country                 | Number of refugees |
|-------------------------|--------------------|
| Uganda                  | 1.57 M             |
| Sudan                   | 975 710            |
| Ethiopia                | 946 214            |
| Kenya                   | 654 147            |
| South Sudan             | 336 609            |
| United Rep. of Tanzania | 235 082            |
| Rwanda                  | 129 543            |
| Burundi                 | 87 674             |
| Somalia                 | 37 241             |
| Djibouti                | 31 165             |
| Eritrea                 | 118                |

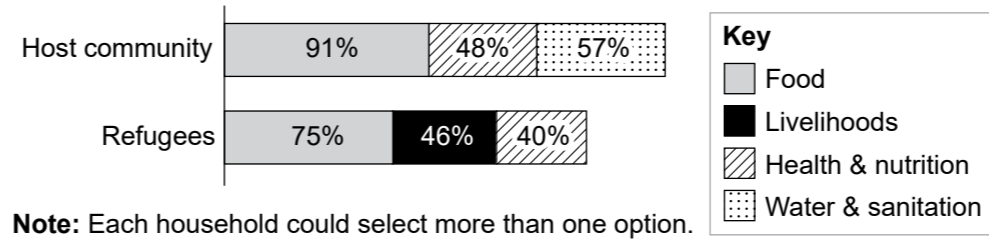


**Key**  
 △ Location of refugee camps in Uganda  
 → Major refugee movements (>1000 persons/year)  
 → Minor refugee movements (<1000 persons/year)  
**Note:** Arrows do not reflect size of population flows or actual routes of movement.

**Stimulus 2: Landcover change, Bidibidi refugee camp and surrounds, Yumbe District**



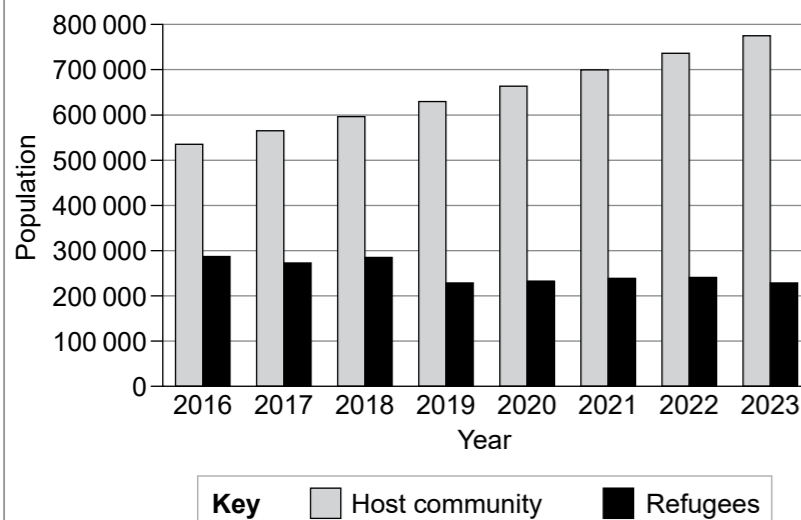
**Stimulus 3: Most reported household needs, Yumbe District, 2018**



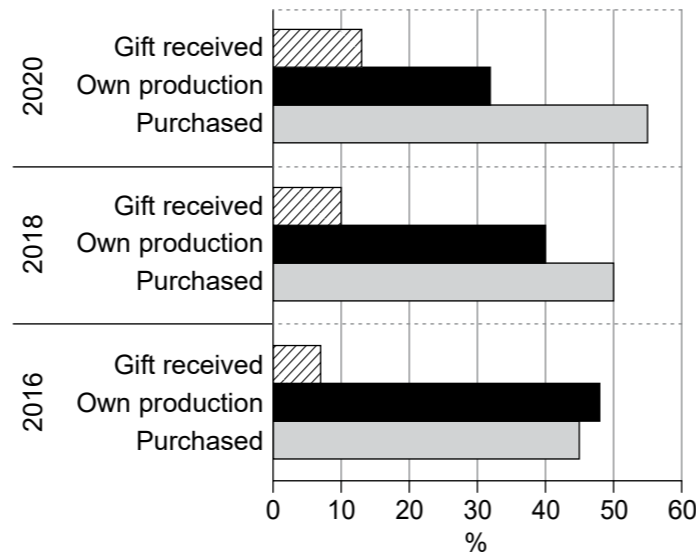
**Stimulus 4: Access to agricultural land, Yumbe District, 2018**

|                                  | Host community | Refugees |
|----------------------------------|----------------|----------|
| Provided free land by government | 0%             | 91%      |
| Accesses land not owned          | 4%             | 6%       |
| Rents the land                   | 8%             | 0%       |
| Owens the land                   | 86%            | 2%       |

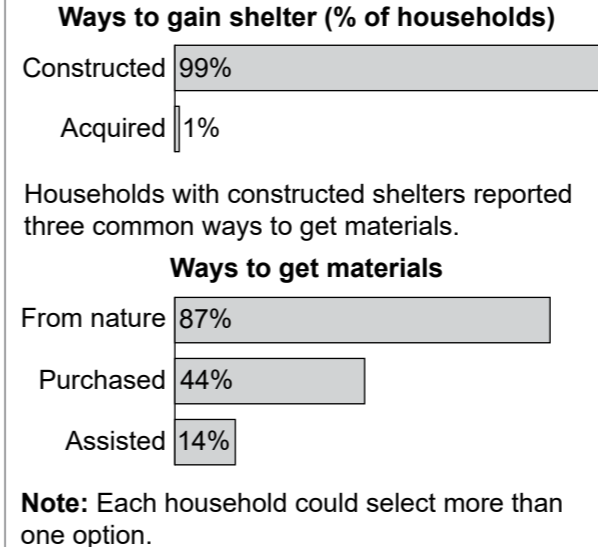
**Stimulus 5: Host community and refugee populations, Yumbe District, 2016–2023**



**Stimulus 6: Ways to access food, refugees and host community combined, Yumbe District**



**Stimulus 7: Shelter construction, Bidibidi refugee camp, 2019**



**Stimulus 8: Wood fuel demand and potential supply (biomass), Yumbe District, 2023**

