

2010 Data summary

State Distribution of Overall Positions and Field Positions

Background

Overall Positions (OPs)¹ provide a statewide rank order of students from 1 (highest) to 25 (lowest) based on students' achievement in Authority subjects studied for the Queensland Senior Certificate. A student's OP shows how well that student has performed in their senior studies when compared with the performances of all other OP-eligible students in Queensland.

OPs are used in the selection of students for tertiary education courses. They are used by tertiary institutions as one basis for selecting applicants for a course when there are more eligible applicants than quota places for that course.

Students are eligible for an OP at the end of Year 12 provided they have completed a minimum of 20 semester units of Authority subjects, including at least three subjects for all four semesters, and sat for the Queensland Core Skills Test in that year.

Field Positions (FPs) are calculated only for OP-eligible students. A field is an area of study that emphasises particular knowledge and skills. An FP is a rank order from 1 (highest) to 10 (lowest) in that area of study. There are five fields with about 20% of students qualifying for all five FPs and most students qualifying for three or four fields.

OP distribution

Figure 1 represents the distribution of the 25 704 Queensland students² who received an OP in 2010. Table 1 includes for each band: the number, the cumulative number (from 1 up to that band), the percentage and the cumulative percentage of students.

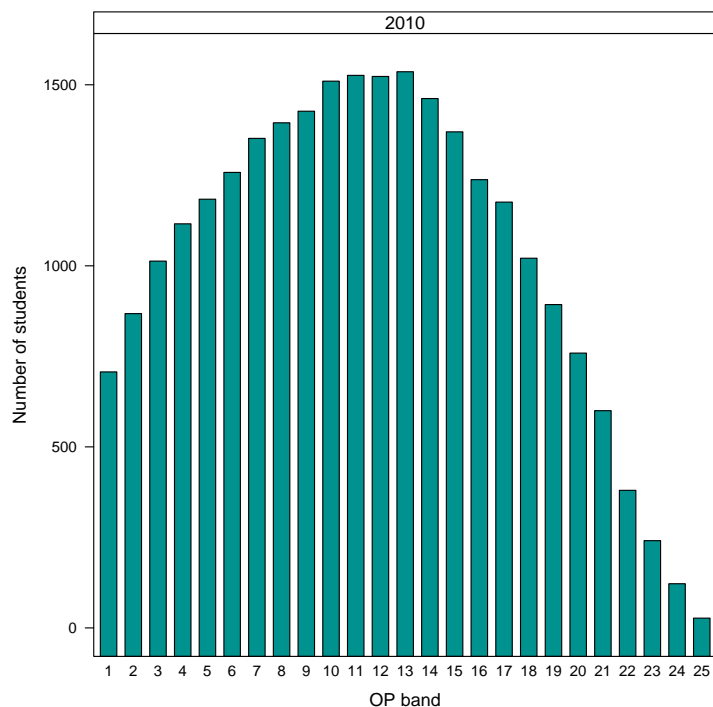


Figure 1: 2010 OP distribution

¹ In 1992 OPs and FPs replaced the Tertiary Entrance (TE) Score. All data in this document relate to OPs and FPs.

² Visa students are not included unless indicated. A visa student is a student who is not a citizen or permanent resident of Australia. Visa students are not generally regarded as OP/FP-eligible. They may qualify for equivalent-OPs/FPs.

Table 1: 2010 OP distribution, cumulative percentages

OP band	All students	%	Cumulative	Cumulative %
1	707	2.75	707	2.75
2	868	3.38	1575	6.13
3	1013	3.94	2588	10.07
4	1116	4.34	3704	14.41
5	1184	4.61	4888	19.02
6	1258	4.89	6146	23.91
7	1352	5.26	7498	29.17
8	1395	5.43	8893	34.60
9	1427	5.55	10320	40.15
10	1510	5.87	11830	46.02
11	1526	5.94	13356	51.96
12	1523	5.93	14879	57.89
13	1536	5.98	16415	63.86
14	1462	5.69	17877	69.55
15	1370	5.33	19247	74.88
16	1238	4.82	20485	79.70
17	1176	4.58	21661	84.27
18	1021	3.97	22682	88.24
19	893	3.47	23575	91.72
20	759	2.95	24334	94.67
21	600	2.33	24934	97.00
22	380	1.48	25314	98.48
23	241	0.94	25555	99.42
24	122	0.47	25677	99.89
25	27	0.11	25704	100.00
Total	25704			

Calculation of OPs

OPs are calculated each year by the Queensland Studies Authority using student assessment information from Queensland schools. The process for determining OPs is explained further in *Calculating OPs: The Basic Principles*, available at http://www.qsa.qld.edu.au/downloads/senior/te_op_basics.pdf.

Comparing OPs across years

*The Review of Tertiary Entrance in Queensland 1990*³ recommended “basic year-to-year comparability” of OPs. Consequently, a numerical process is used to equate students’ performances across years. This means that there is no fixed quota of students in each band and that year-to-year differences in the OP-eligible cohort may produce variations in the proportions of students in each band.⁴

OP distribution within gender

Figure 2 and Table 2 show the distribution of OPs within gender. Care is needed when making comparisons between the numbers of females and males in each band. The participation rates are different between the genders as are the proportions of males and females choosing to be OP-eligible — Figure 3 shows a percentage distribution within each gender.

There are more females in each OP band except 1 and 25. In the higher OP bands, there are many more females than males whilst the differences are quite small in bands 23 and 24.

³ Report submitted to the Minister for Education by the Tertiary Entrance Reviewer, Professor Nancy Viviani.

⁴ Since 2005 the corresponding percentage of OP-eligible students receiving an OP 1 has increased from 2%. Both the increase in the percentage of OP 1 students and decrease in OP 25 students is because the standard for each OP is held constant from year to year and there has been a decrease in the proportion of the population that is OP-eligible in this period, with a greater number of the lower achieving students choosing pathways that do not lead to OP-eligibility.

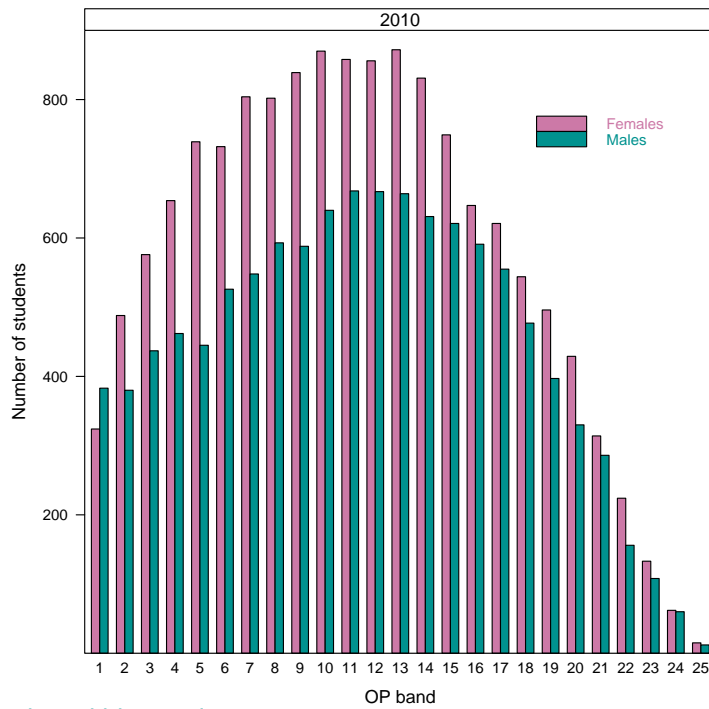


Figure 2: 2010 OP distribution within gender

Table 2: 2010 OP distribution, within gender

OP band	Females	Females %	Males	Males %
1	324	2.24	383	3.41
2	488	3.37	380	3.39
3	576	3.98	437	3.89
4	654	4.52	462	4.12
5	739	5.10	445	3.96
6	732	5.06	526	4.69
7	804	5.55	548	4.88
8	802	5.54	593	5.28
9	839	5.79	588	5.24
10	870	6.01	640	5.70
11	858	5.93	668	5.95
12	856	5.91	667	5.94
13	872	6.02	664	5.92
14	831	5.74	631	5.62
15	749	5.17	621	5.53
16	647	4.47	591	5.27
17	621	4.29	555	4.94
18	544	3.76	477	4.25
19	496	3.43	397	3.54
20	429	2.96	330	2.94
21	314	2.17	286	2.55
22	224	1.55	156	1.39
23	133	0.92	108	0.96
24	62	0.43	60	0.53
25	15	0.10	12	0.11
Total	14479		11225	

OP percentage distribution within gender

Figure 3 and Table 2 show the percentage distribution of OPs within each gender.⁵ Since, more females than males are eligible for an OP, it is useful to express the figures as percentages of the total number of females or males.

In most years, except for OPs 1 and 2, the higher OP bands contain a greater percentage of the female OP-eligible students. The lower bands, have a greater percentage of males.

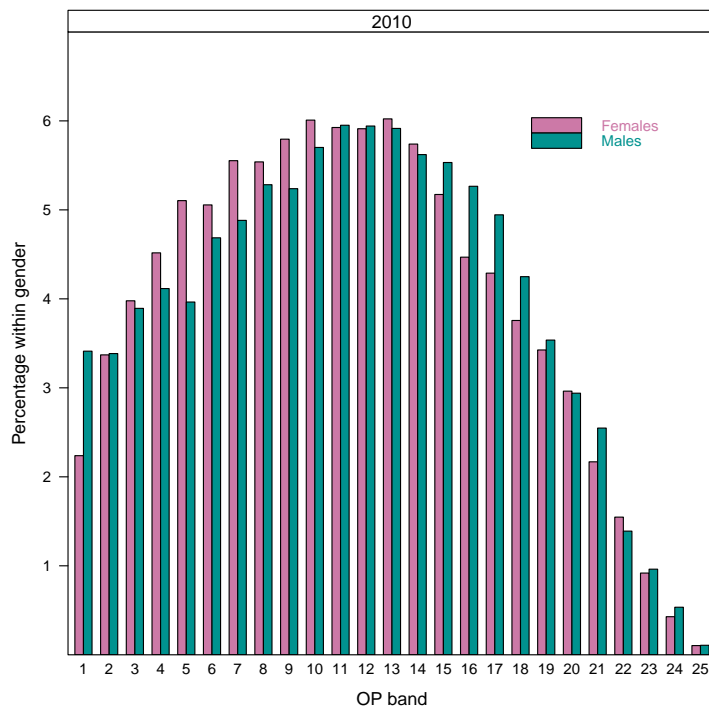


Figure 3: 2010 OP percentage distribution within gender

⁵ The proportion of females in each OP band expressed as a percentage of the total number of females, and the same for males.

FP distributions

Figure 4 and Table 3 show the FP distributions for 2010. Table 4 shows the combinations of fields for which students were eligible in 2010. In up to five fields, FPs show a student's rank on a 1 to 10 scale (with 1 being the highest) based on their achievement in Authority subjects. These fields identify areas of study that emphasise particular knowledge and skills. FPs are determined only for OP-eligible students and students only receive FPs in the fields for which they are eligible, according to the Authority subjects they studied.

The five fields are:

- Field A** — extended written expression involving complex analysis and synthesis of ideas
- Field B** — short written communication involving reading, comprehension and expression in English or a foreign language
- Field C** — basic numeracy involving simple calculations, and graphical and tabular interpretation
- Field D** — solving complex problems involving mathematical symbols and abstractions
- Field E** — substantial practical performance involving physical or creative arts or expressive skills.

Table 3: 2010 FP distributions

Field	1	2	3	4	5	6	7	8	9	10	Total
A	1022	1565	2247	2979	3254	3446	3481	3229	2496	1474	25193
B	892	1357	1962	2594	2891	3029	3052	2797	2212	1335	22121
C	921	1435	2069	2768	3089	3263	3195	2972	2344	1412	23468
D	366	555	800	1087	1202	1266	1215	1179	918	543	9131
E	898	1363	1966	2596	2858	3096	3036	2783	2212	1326	22134

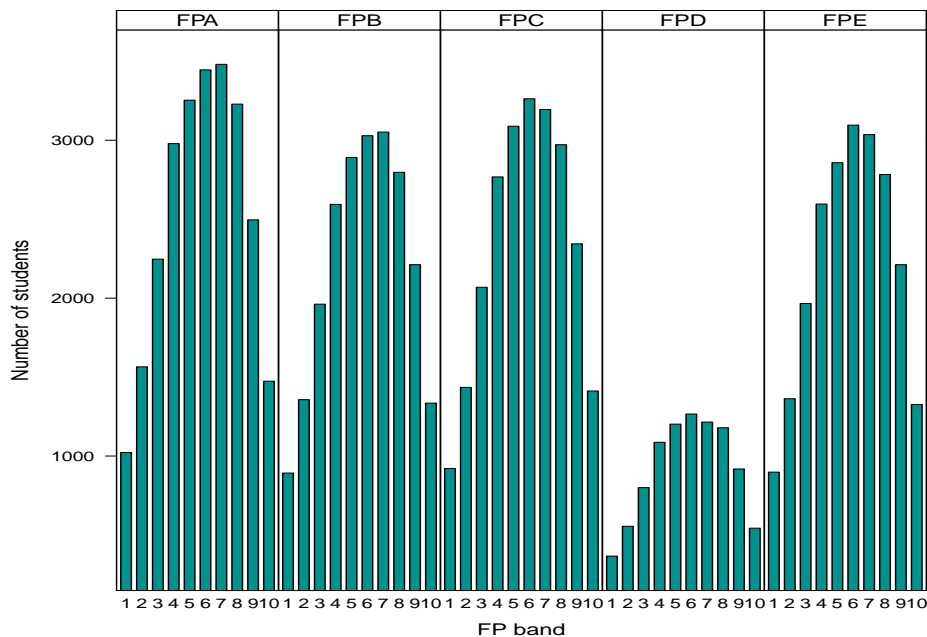


Figure 4: 2010 FP distribution

Table 4: Numbers of students per FP combination, 2010

Sets of FPs	Students		Total	%
ABCDE	7245	5 FPs	7245	28.19
ABCD	842			
ABCE	10392			
ACDE	520			
BCDE	33	4 FPs	11787	45.86
ABC	1892			
ABE	1258			
ACD	322			
ACE	1738			
BCD	25			
BCE	80			
CDE	37	3 FPs	5352	20.82
AB	251			
AC	79			
AE	647			
BC	36			
BE	66			
CD	107			
CE	112	2 FPs	1298	5.05
A	7			
B	1			
C	8			
E	6	1 FP	22	0.09

Subject weights

While FPs are calculated using a similar process to OPs, Authority subjects are not weighted equally for the calculations of FPs. Field weights mean that different subjects contribute differently to the calculations for each field⁶. For example, English (5) is more heavily weighted than Maths B (1) when calculating its contribution to FP A. Table 5 lists all Authority subjects offered in 2010 and the weights for each field position.

Table 5: 2010 subject weights for calculating OPs and FPs

Syllabus	OP	A	B	C	D	E	Syllabus	OP	A	B	C	D	E
1 English (2002)	5	5	3	1	0	4	36 Mathematics A	5	1	2	5	5	1
1 English (2008 Trial)	5	5	3	1	0	4	37 Mathematics B	5	1	2	5	5	1
2 English Extension (Literature)	5	5	3	1	0	3	38 Mathematics C	5	1	2	5	5	1
3 English for ESL Learners	5	5	4	1	0	3	40 Chemistry	5	4	3	5	5	3
4 Indonesian Extension (2003)	5	2	5	1	0	4	41 Physics	5	4	3	5	5	3
4 Indonesian Extension (2009)	5	2	5	1	0	4	42 Biology	5	4	3	5	3	3
5 French	5	1	5	1	0	4	43 Earth Science	5	3	4	5	3	3
6 German	5	1	5	1	0	4	44 Multi-Strand Science	5	2	3	5	3	3
7 Indonesian	5	1	5	1	0	4	45 Marine Studies	5	3	3	5	3	4
8 Italian	5	1	5	1	0	4	46 Science21	5	3	3	5	3	3
9 Japanese	5	1	5	1	0	4	51 Agricultural Science	5	3	3	5	3	4
10 Russian	5	1	5	1	0	4	55 Aerospace Studies	5	4	4	5	4	2
11 Chinese	5	1	5	1	0	4	59 Tourism	5	3	4	3	1	3
12 Vietnamese	5	1	5	1	0	4	60 Accounting	5	3	3	5	4	2
13 Korean	5	1	5	1	0	4	62 Business Organisation & Management	5	4	3	4	2	3
14 Modern Greek	5	1	5	1	0	4	63 Business Communication & Technologies	5	3	4	4	2	3
15 French Extension (2002)	5	2	5	1	0	4	65 Information Technology Systems (2006)	5	4	3	5	3	4
15 French Extension (2009)	5	2	5	1	0	4	65 Information Technology Systems (2008)	5	4	3	5	3	4
16 German Extension (2002)	5	2	5	1	0	4	67 Health Education	5	5	3	3	2	2
16 German Extension (2009)	5	2	5	1	0	4	68 Physical Education	5	4	3	3	2	5
17 Latin	5	3	5	1	0	2	71 Home Economics	5	3	3	3	2	4
18 Spanish	5	1	5	1	0	4	72 Hospitality Studies	5	3	3	3	1	4
19 Polish	5	1	5	1	0	4	74 Engineering Technology	5	3	3	5	4	3
20 Ancient History	5	5	4	2	0	2	76 Graphics	5	2	3	5	4	4
21 Modern History	5	5	4	2	0	2	78 Technology Studies	5	4	3	4	3	4
22 Futures	5	5	4	3	1	3	80 Visual Art	5	3	2	2	0	5
23 Aboriginal & Torres Strait Islander Studies	5	4	4	2	0	3	85 Dance	5	3	3	2	0	5
24 Geography	5	5	5	4	2	3	86 Study of Religion	5	5	4	2	0	3
25 Political Studies	5	5	5	3	0	2	87 Information Processing & Technology	5	3	3	4	4	3
27 Economics	5	5	5	5	3	2	88 Drama	5	4	3	2	0	5
28 Study of Society	5	5	5	3	0	2	91 Music	5	3	2	2	2	5
29 Legal Studies	5	5	5	3	0	2	93 Film, Television and New Media	5	4	3	2	0	5
33 Philosophy & Reason	5	5	4	3	3	2	94 Music Extension	5	3	2	2	2	5

⁶ For the calculation of OPs, all subjects are weighted equally.

FP distributions within gender

Figure 5 and Table 6 show the FPs and their distributions in the state for 2010 within gender.

Table 6: Numbers of students eligible for each FP within gender, 2010

Field	Gender	1	2	3	4	5	6	7	8	9	10
A	All students	1022	1565	2247	2979	3254	3446	3481	3229	2496	1474
	Female	701	1050	1426	1862	1935	1958	1818	1647	1177	647
	Male	321	515	821	1117	1319	1488	1663	1582	1319	827
B	All students	892	1357	1962	2594	2891	3029	3052	2797	2212	1335
	Female	498	820	1202	1586	1703	1735	1701	1454	1147	722
	Male	394	537	760	1008	1188	1294	1351	1343	1065	613
C	All students	921	1435	2069	2768	3089	3263	3195	2972	2344	1412
	Female	390	736	1128	1489	1689	1751	1751	1658	1324	854
	Male	531	699	941	1279	1400	1512	1444	1314	1020	558
D	All students	366	555	800	1087	1202	1266	1215	1179	918	543
	Female	107	212	317	477	498	463	416	410	322	183
	Male	259	343	483	610	704	803	799	769	596	360
E	All students	898	1363	1966	2596	2858	3096	3036	2783	2212	1326
	Female	510	815	1178	1572	1643	1744	1697	1460	1158	725
	Male	388	548	788	1024	1215	1352	1339	1323	1054	601

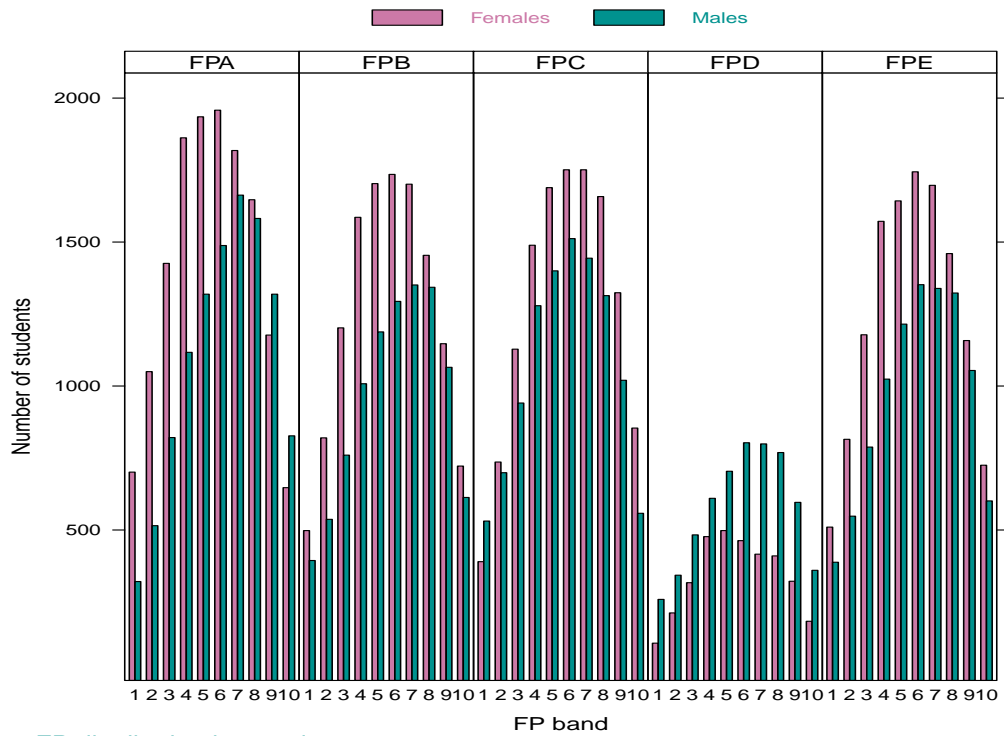


Figure 5: 2010 FP distribution by gender

FPs percentage distribution within gender

Figure 6 and Table 7 show FPs and their distributions in the state for 2010 within gender. These show the number of boys that achieved each FP as a percentage of FP-eligible boys, and the same for girls.

Table 7: Percentages of students per FP band, within gender, 2010

Field	Gender	1	2	3	4	5	6	7	8	9	10
A	All students	4.1	6.2	8.9	11.8	12.9	13.7	13.8	12.8	9.9	5.9
	Female	4.9	7.4	10.0	13.1	13.6	13.8	12.8	11.6	8.3	4.6
	Male	2.9	4.7	7.5	10.2	12.0	13.6	15.2	14.4	12.0	7.5
B	All students	4.0	6.1	8.9	11.7	13.1	13.7	13.8	12.6	10.0	6.0
	Female	4.0	6.5	9.6	12.6	13.6	13.8	13.5	11.6	9.1	5.7
	Male	4.1	5.6	8.0	10.6	12.4	13.6	14.1	14.1	11.2	6.4
C	All students	3.9	6.1	8.8	11.8	13.2	13.9	13.6	12.7	10.0	6.0
	Female	3.1	5.8	8.8	11.7	13.2	13.7	13.7	13.0	10.4	6.7
	Male	5.0	6.5	8.8	12.0	13.1	14.1	13.5	12.3	9.5	5.2
D	All students	4.0	6.1	8.8	11.9	13.2	13.9	13.3	12.9	10.1	6.0
	Female	3.1	6.2	9.3	14.0	14.6	13.6	12.2	12.0	9.5	5.4
	Male	4.5	6.0	8.4	10.7	12.3	14.0	14.0	13.4	10.4	6.3
E	All students	4.1	6.2	8.9	11.7	12.9	14.0	13.7	12.6	10.0	6.0
	Female	4.1	6.5	9.4	12.6	13.1	14.0	13.6	11.7	9.3	5.8
	Male	4.0	5.7	8.2	10.6	12.6	14.0	13.9	13.7	10.9	6.2

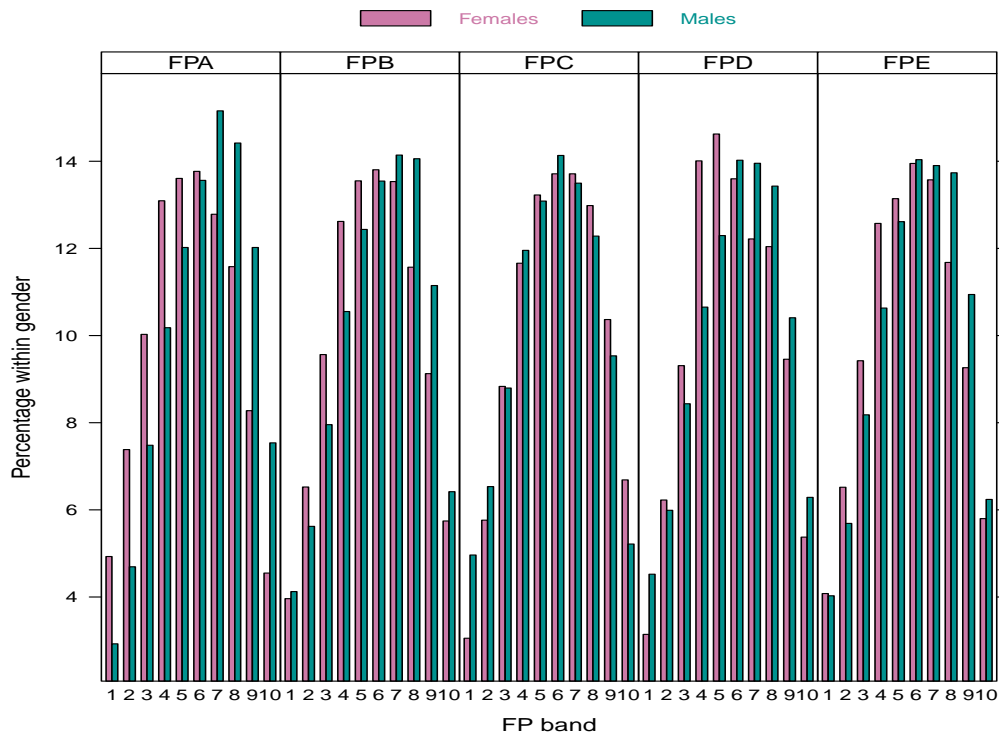


Figure 6: 2010 FP percentage distribution by gender

Contact us

For further information about this document contact:

Analysis and Reporting Branch
 Queensland Studies Authority
 Email: analysis.reporting@qsa.qld.edu.au