

2015 Data summary

QCS attendance and grades

Background

Year 12 students in approved secondary schools and non-school-based applicants who have previously completed Year 12 or who are at least 18 years of age (through private entry) are given the opportunity to sit for the Queensland Core Skills (QCS) Test. The QCS Test is:

- a common statewide test for Queensland Year 12 students
- an achievement test, not an intelligence test or an aptitude test
- grounded in the Queensland senior curriculum
- accessible to all Year 12 students regardless of individual differences in subject patterns
- a standardised test requiring reading and writing in Australian English.

The Queensland Core Skills Test

The QCS Test is dual-purpose: it produces a result for each candidate, and it provides information for the calculation of Overall Positions (OPs). However, individual results in the test are not used directly in the calculation of a student's OP.

It tests the 49 assessable common elements that are the threads of the Queensland senior curriculum. These elements are called Common Curriculum Elements (CCEs), see www.qcaa.qld.edu.au/downloads/senior/qcs_elements.pdf. The test consists of four papers — Writing Task (WT), Short Response (SR), and two Multiple Choice (MC) papers. Candidates are expected to respond to a variety of stimulus materials such as prose passages, poetry, graphs, tables, maps, mathematical and scientific data, cartoons and reproductions of works of art.

While the level of sophistication demanded by the test is appropriate to Year 12 students, particular knowledge of specific Year 12 subjects is not tested. However, the test assumes basic levels of general knowledge and vocabulary and a Year 10 knowledge of mathematical operations. The test, being cross-curriculum, provides useful supplementary information to the subject results and is an important component of the senior education profile (SEP).

The **WT paper** tests candidates' command of the written English language. It requires the composition of an extended piece (about 600 words) of continuous prose, which allows students to demonstrate their expressive and productive skills. Each WT script is marked in six aspects, with each aspect marked twice. At least three markers assess each script, each in four of the six aspects, and they work independently. The trained and registered markers mark according to predetermined standards developed for a set of criteria. There is a process for monitoring marker consistency.

The **SR paper** requires candidates to respond to a command or to answer a question, e.g. by writing a sentence or paragraph, drawing a diagram or performing a calculation. The responses are marked by trained and registered markers who are given detailed instructions and a specific marking scheme for each test item. Each candidate response is marked at least twice by different markers working independently. A referee marking occurs when markers disagree. There is a process for monitoring marker consistency.

For each item on the **MC papers** there are four options (A, B, C, D). Candidates are asked to select the best option, given the context set by the stimulus material and the conditions specified in the item. The response sheets are marked electronically. Each correct answer scores one mark, each incorrect answer scores zero, each unattempted item scores zero and an item that has more than one response scores zero.

Test items are grouped under different criteria according to how they test a student's ability to:

- comprehend and collect
- structure and sequence
- analyse, assess and conclude
- create and present
- apply techniques and procedures.

Attendance

Students who are eligible for an Overall Position (OP) or equivalent-OP are required to sit for the QCS Test. Students who are ineligible for an OP or equivalent-OP are not required to sit for the test but may elect to do so.

Table 1: QCS attendance for OP-eligible¹/ineligible students

Year	Students Certificated ²	Eligible	Sat QCS	QCS Exempt Eligible	QCS Exempt Ineligible	Ineligible who sat	Otherwise eligible but did not sit ³
2015	50019	25764	26850	590	6	1676	1355
2014	49250	26125	27790	501	8	2166	1245
2013	47908	25884	27793	437	15	2346	1013
2012	47181	26233	28365	474	11	2606	900
2011	46136	25947	28326	503	37	2882	990

Table 2: QCS attendance for visa students⁴ (Equivalent OP-eligible/ineligible)

Year	Students Certificated	Eligible	Sat QCS	QCS Exempt Eligible	QCS Exempt Ineligible	Ineligible who sat	Otherwise eligible but did not sit
2015	971	673	695	10	1	32	43
2014	821	605	617	11	0	23	27
2013	963	728	736	27	2	35	32
2012	1022	790	819	6	0	35	31
2011	1073	868	892	9	0	33	30

¹ 'OP-eligible' refers to the status of the student at the end of the year when SEPs are issued.

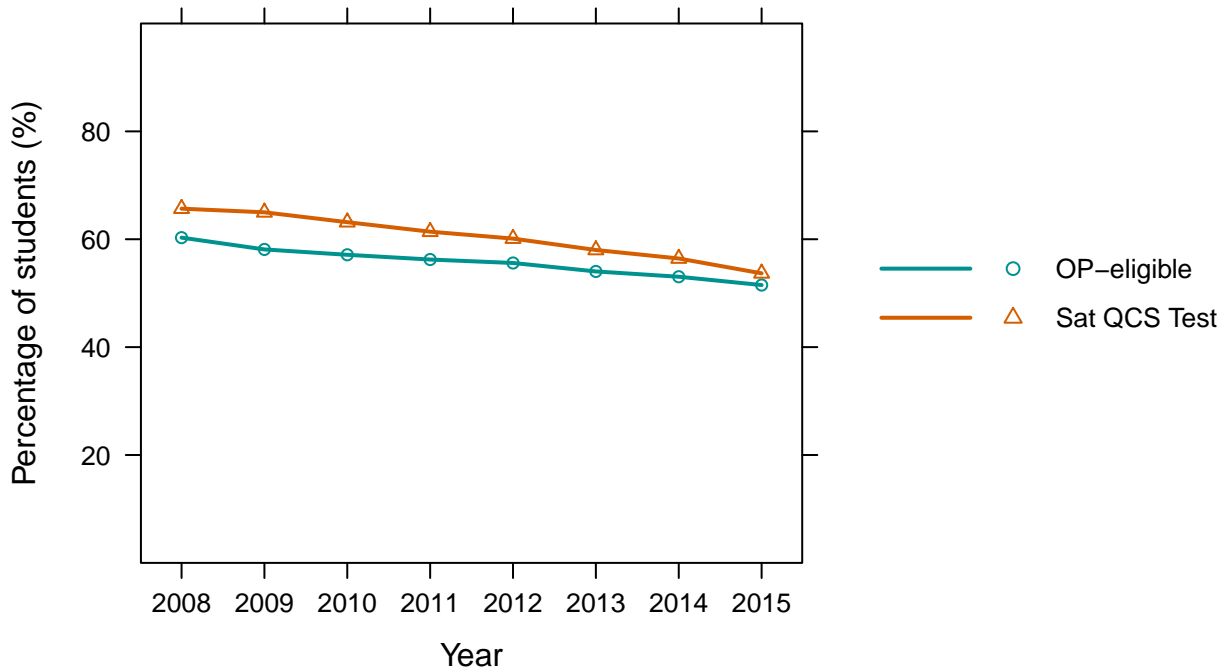
² The cohort of students considered includes any student who received an SEP at the end of that year.

³ Students who, by consideration of subjects studied, would have been OP-eligible but did not sit the QCS Test.

⁴ A visa student is a student who is not a citizen or permanent resident of Australia. They may qualify for an equivalent-OP. Visa students are not included unless indicated.

Figure 1: OP-eligible students and students who sat the QCS Test, 2008–2015

(a) By year as a percentage of cohort



(b) By year as number of students

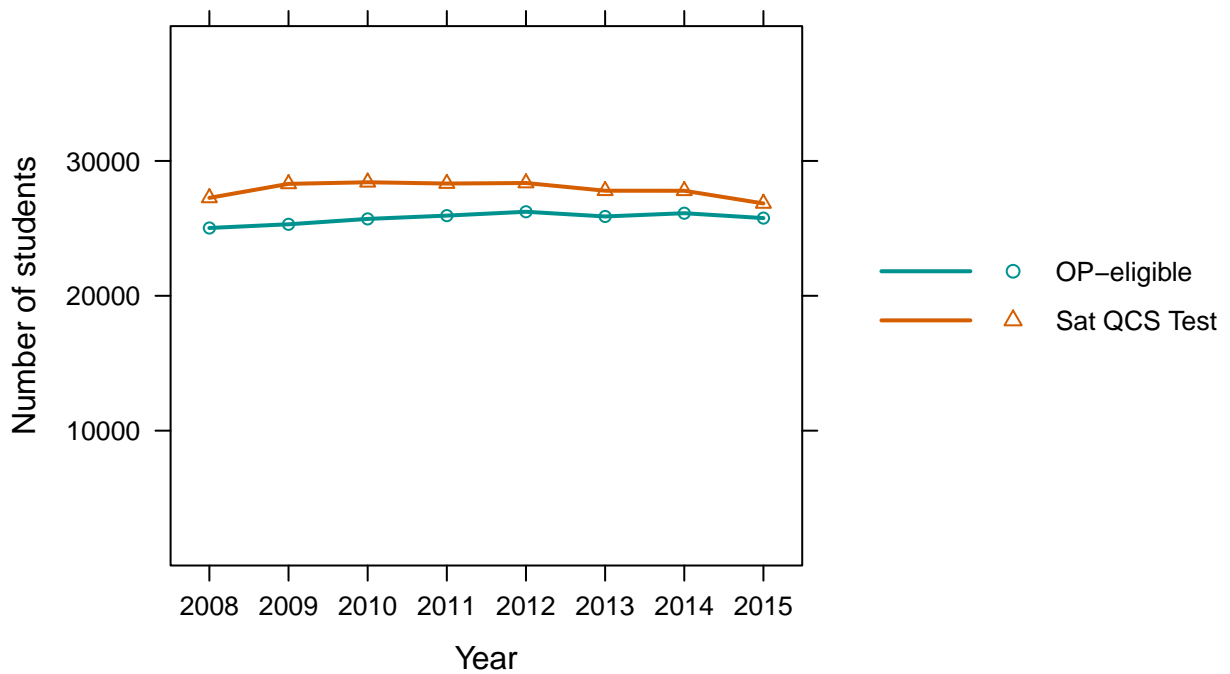
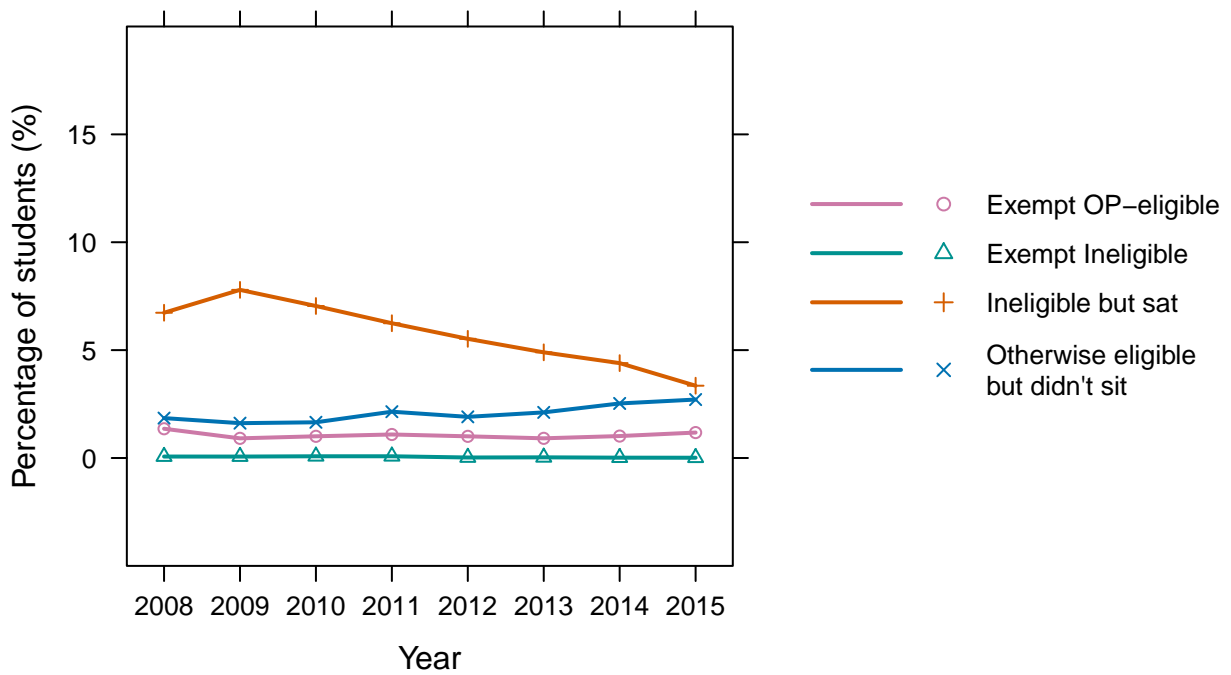
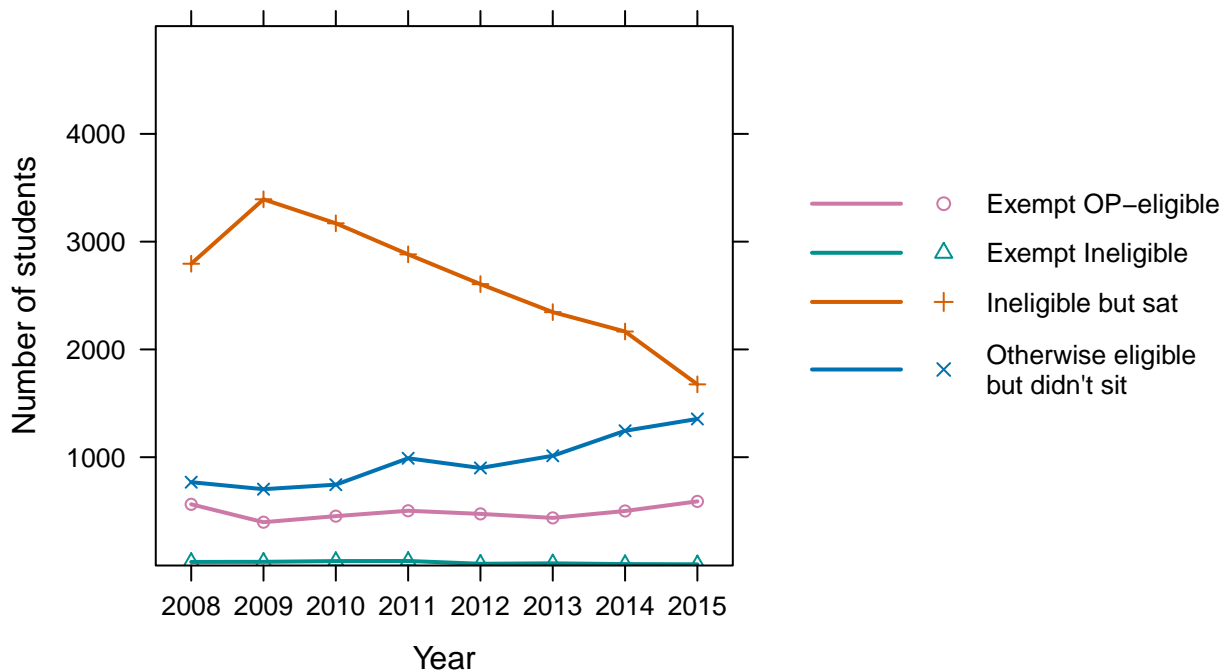


Figure 2: Exempt and OP-ineligible students, 2008–2015

(a) By year as percentage of cohort



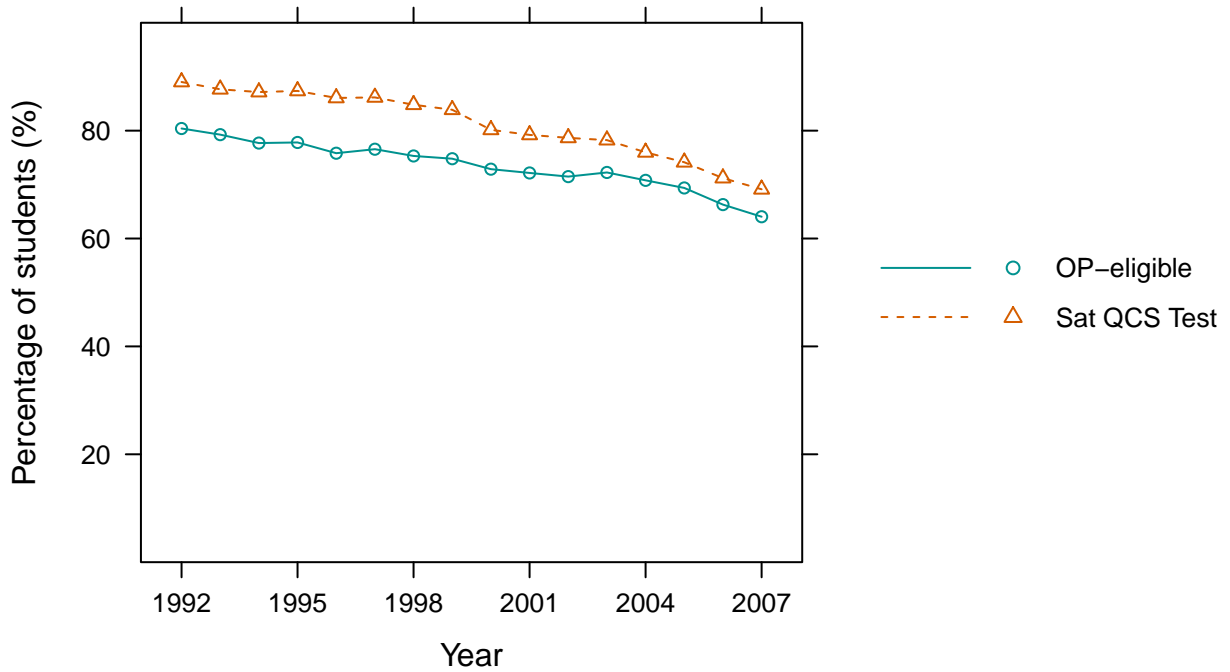
(b) By year as number of students



In the following graphs showing QCS attendance trends for 1992–2007, the cohort includes students eligible for a Queensland Senior Certificate.

Figure 3: OP-eligible students and students who sat the QCS Test, 1992–2007

(a) OP-eligible and students who sat the QCS Test



(b) OP-eligible and students who sat the QCS Test

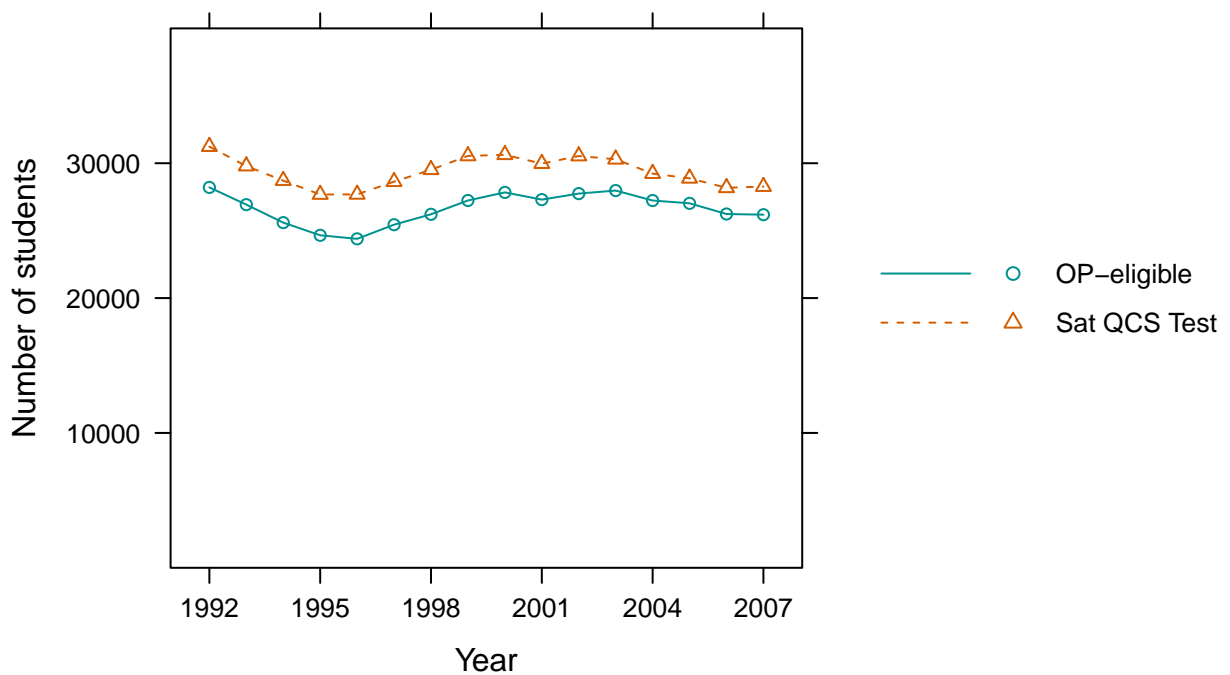
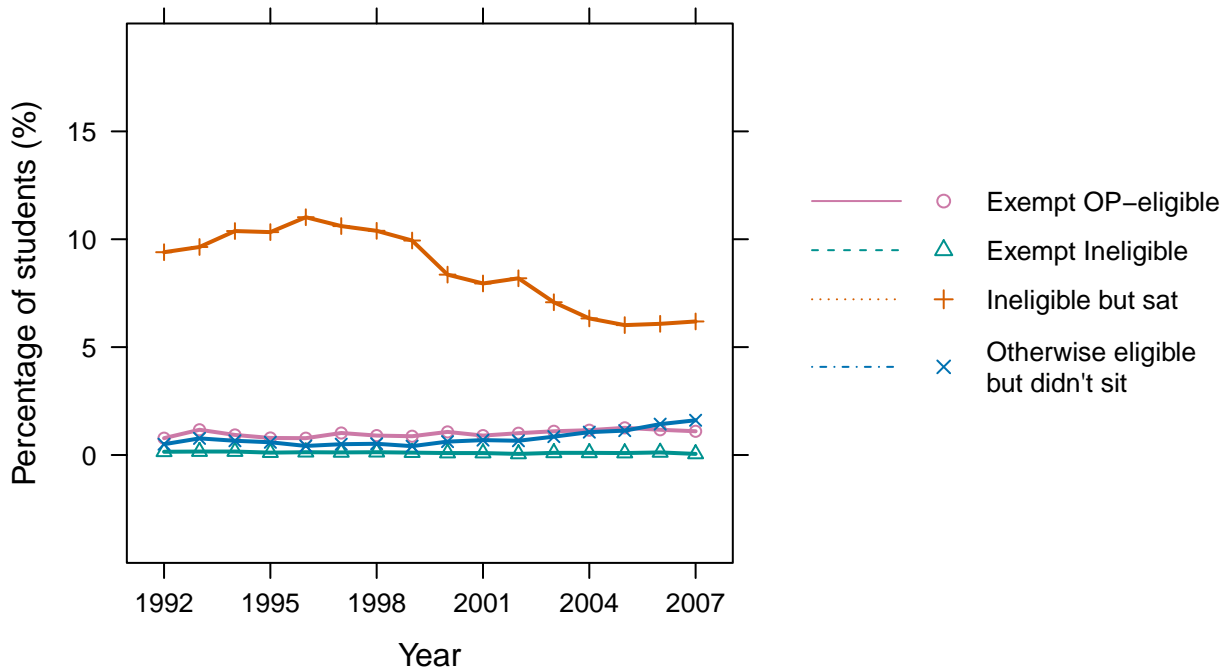
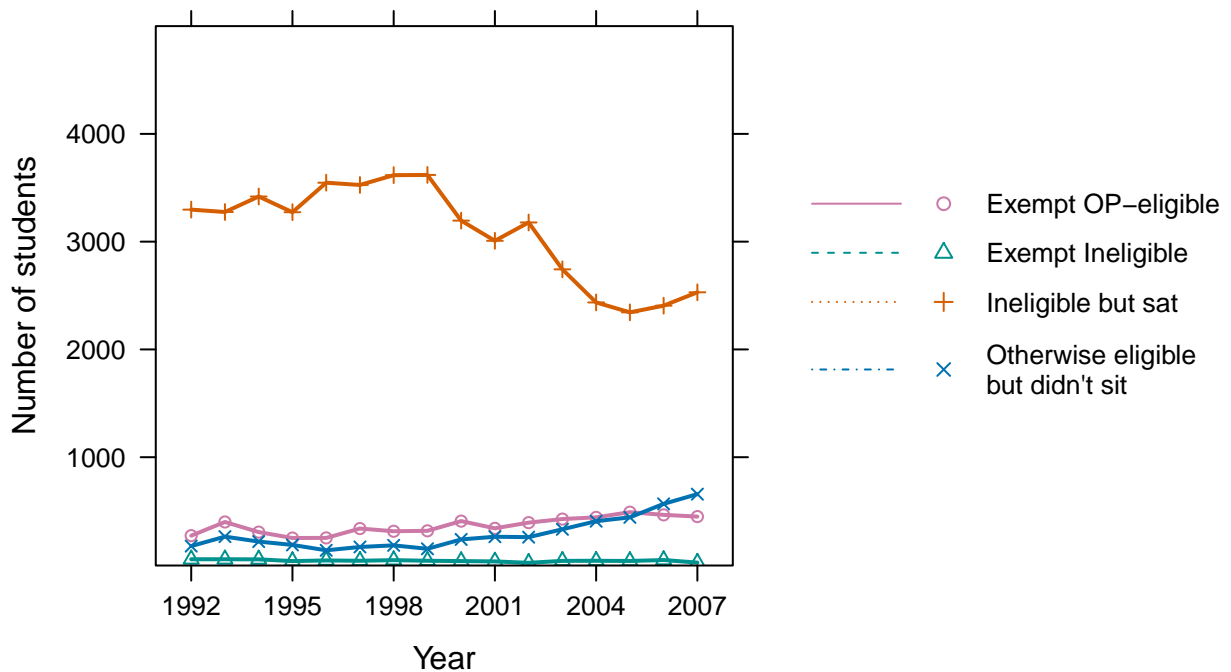


Figure 5: Exempt and OP-ineligible students, 1992–2007

(a) By year as percentage of cohort



(b) By year as number of students



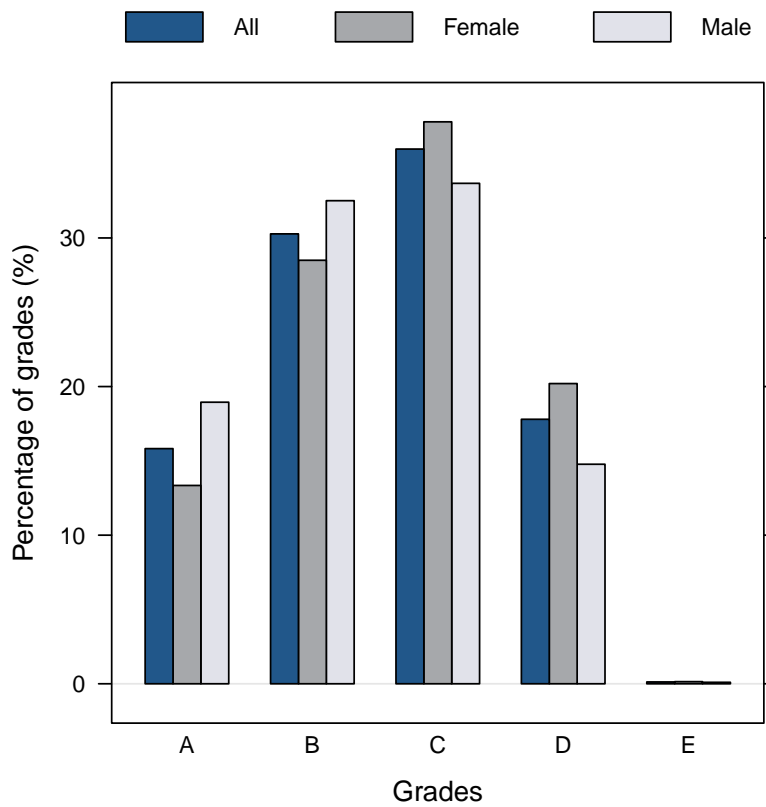
Grades awarded

A student's individual QCS Test result is expressed as a grade from A (highest) to E.

	Gender	A	B	C	D	E	Total	%
OP-elig	Female	1872	3998	5305	2835	20	14030	55.7
	Male	2111	3624	3752	1646	11	11144	44.3
	All	3983	7622	9057	4481	31	25174	
OP-inelig	Female	13	70	280	554	23	940	56.1
	Male	14	57	223	422	20	736	43.9
	All	27	127	503	976	43	1676	
Equiv OP-elig	Female	7	42	101	209	15	374	49.9
	Male	15	35	110	187	28	375	50.1
	All	22	77	211	396	43	749	
Equiv Inelig	Female	0	0	2	10	1	13	41.9
	Male	0	1	5	8	4	18	58.1
	All	0	1	7	18	5	31	
All	Female	1892	4110	5688	3608	59	15357	55.6
	Male	2140	3717	4090	2263	63	12273	44.4
	All	4032	7827	9778	5871	122	27630	

Figure 6: Distribution of QCS grades by gender

(a) By gender as percentage, 2015



(b) By gender as number of students, 2015

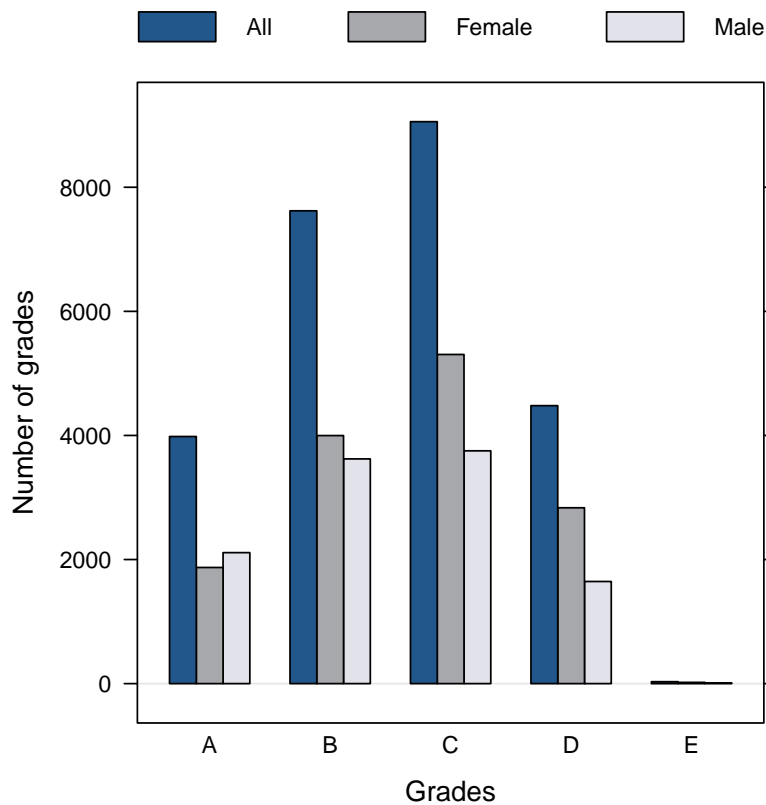
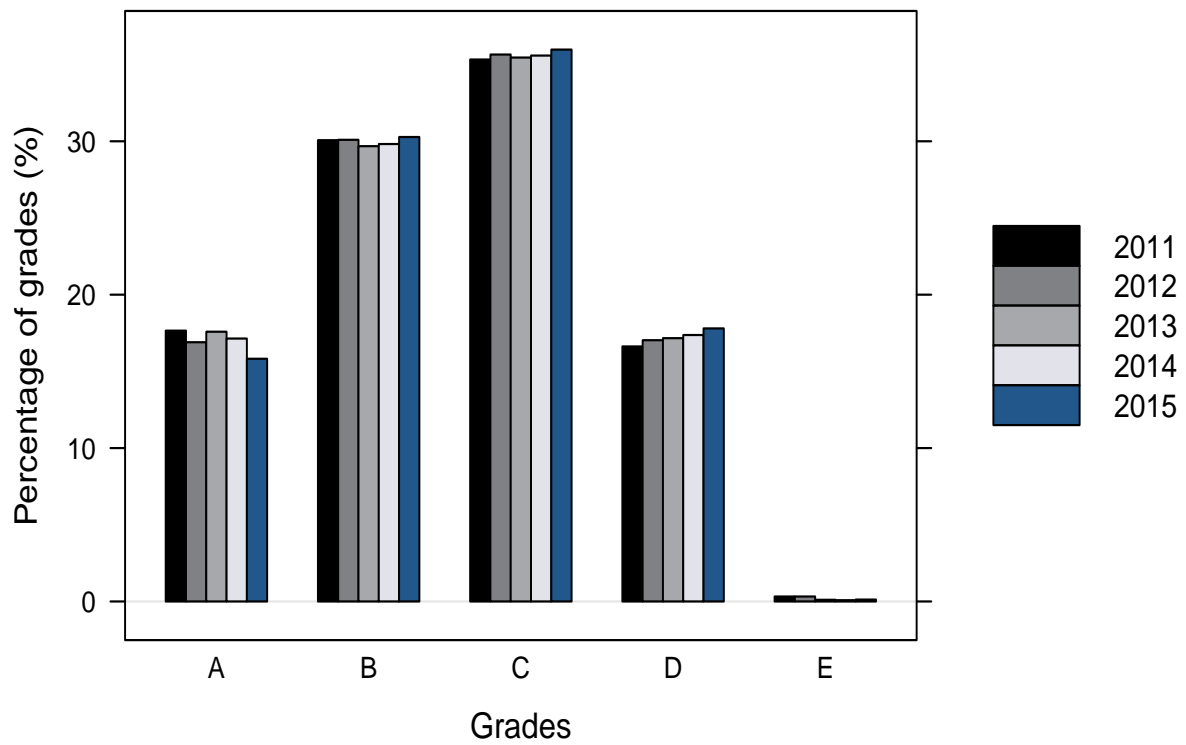
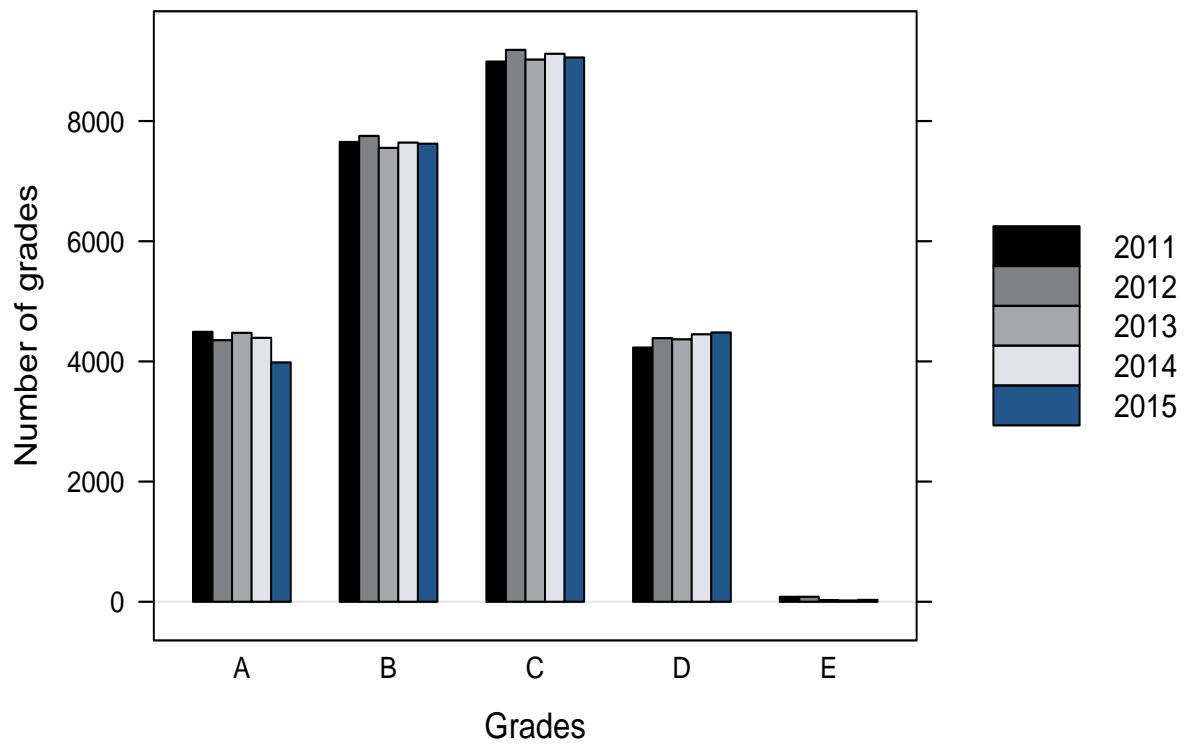


Figure 7: Distribution of QCS grades by year

(a) By year as percentage, 2011–2015



(b) By year as number of students, 2011–2015



More information

If you would like more information, please visit the QCAA website www.qcaa.qld.edu.au and search for 'statistics'. Alternatively, phone 3864 0299 or email the Analysis and Reporting Branch at analysis.reporting@qcaa.qld.edu.au.