

YEAR 9 NUMERACY Calculator allowed – SET 8

Name Date

1

Preferred movie type	
Movie type	number of students
Drama	120
Science fiction	30
Comedy	60
Action	90

What fraction of these students preferred Action movies?

$\frac{1}{3}$

$\frac{3}{10}$

$\frac{1}{5}$

$\frac{9}{20}$

2 A bakery sells one loaf of bread and four bread rolls for \$5.00.

A loaf of bread and one bread roll cost \$3.80.

How much does one roll cost?

3 Sam was facing north.

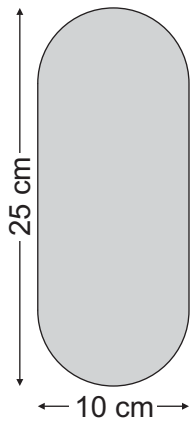
He made a 135° turn clockwise.

Which direction is he facing now?

- north-east
- north-west
- south-east
- south-west

YEAR 9 NUMERACY Calculator allowed – SET 8

4



$$\pi = 3.14$$

What is the area of this shape?

307 cm²



228.5 cm²



564 cm²



328.5 cm²



5 A pool filter processes 5400 litres of water in half an hour.

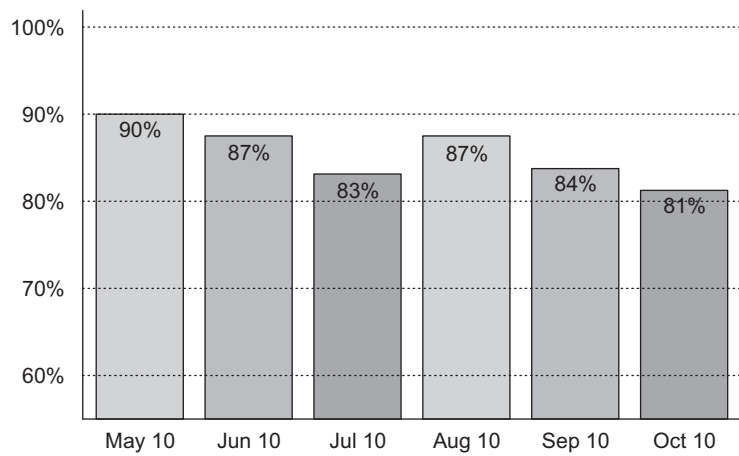
Calculate how many litres of water the filter processes in 12 seconds.

litres

YEAR 9 NUMERACY Calculator allowed – SET 8

6 This graph shows the number of flights that were on time for 6 months.

On-Time Performance of an airline



There were 10500 flights in September 2010.

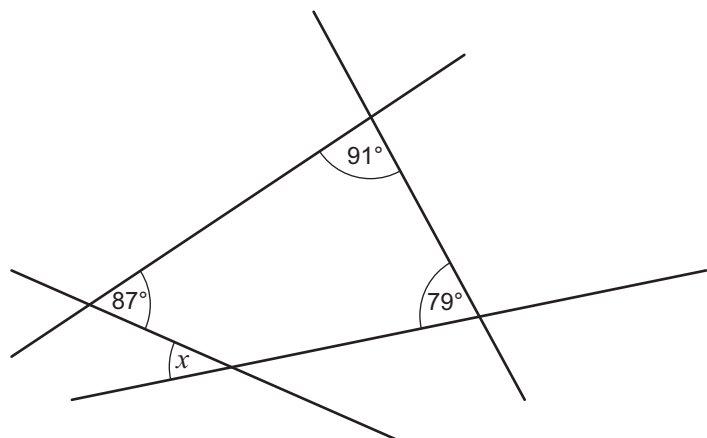
How many flights in September were **not** on time?

flights

7 Which whole numbers between 2 and 40 can be divided by 4 with a remainder of 2, and can also be divided by 5 with a remainder of 1?

8

What is the size of the angle at x ?



- 77°
- 87°
- 93°
- 103°