

Curriculum and assessment overview

Model B

Models for curriculum and assessment

The planning models demonstrate a variety of approaches that schools can use to:

- identify the *Essential Learnings* to be targeted in units of work
- identify the assessable elements and suggested assessment evidence
- align curriculum within and across junctures.

The models could be used in a variety of ways, e.g. to plan curriculum intent for a two-year period, or to record the curriculum that was implemented through negotiation with students. Consider using by KLA, or through an integrated (or connected) approach.

The attached document presents one example of how the models could be used. Other examples, as well as blank templates, are available from the QSA website <www.qsa.qld.edu.au>.

Other planning and auditing resources

The QSA website <www.qsa.qld.edu.au> has a range of resources to help schools plan and audit their curriculum.

APEL is a QSA developed software application to help teachers audit their curriculum and plan units of work using the *Essential Learnings*.

Juncture work plan templates enable detailed auditing of curriculum plans and identification of specific teaching, learning and assessment across a juncture.

About this example

The attached example presents a curriculum and assessment overview for Years 4 and 5 for the following key learning areas (KLAs): Studies of Society Environment, Science, Health and Physical Education, The Arts and Technology. (English and Mathematics programs have been planned and would be taught separately.) For each unit, the overview lists:

- the inquiry topic or context for learning
- the *Essential Learnings* including:
 - Knowledge and Understanding organisers and key concepts
 - Ways of working
- aspects of literacy, numeracy and information and communication technologies
- the assessable elements and modes for gathering assessment evidence.

The example presents a range and balance of assessments, planned to gather evidence of the assessable elements for each KLA each semester.

Supporting resources

Units of work

Units of work are being developed to support the curriculum and assessment planning models. These units have been planned to cater for diverse learning styles and feature:

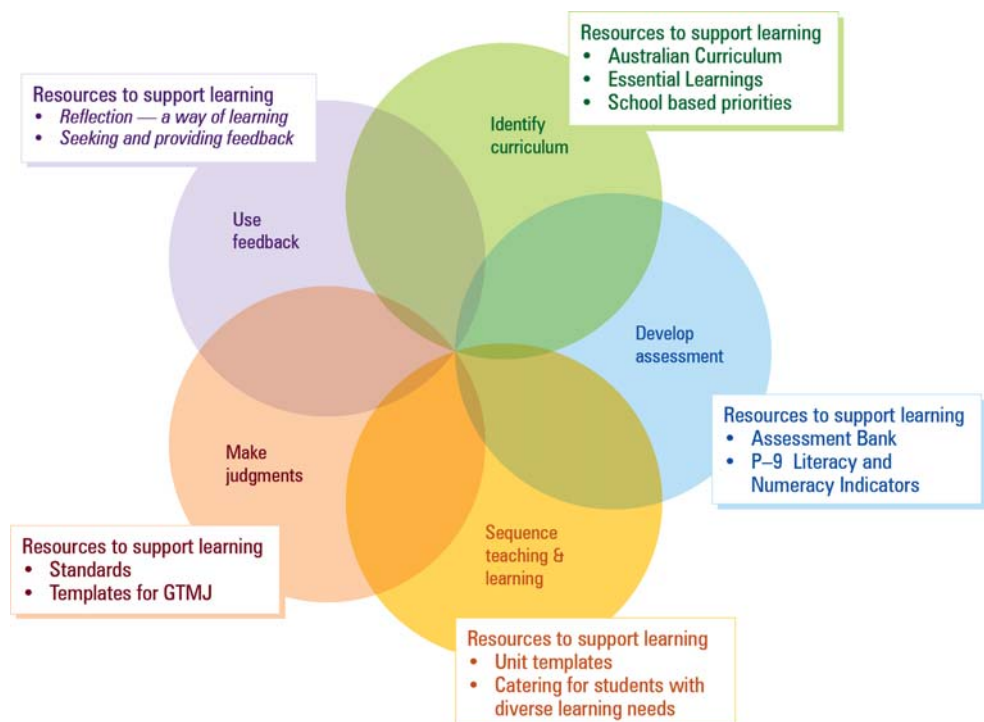
- balanced coverage of *Essential Learnings* across the KLAs
- Indigenous perspectives
- deep learning opportunities
- teaching and learning sequences
- assessment focused on the assessable elements specific to the KLAs, Knowledge and understandings and Ways of working
- opportunities for feedback
- lists of resources.

Planning resources

The following diagram shows the key processes to consider when planning units of work. The supporting resources noted in the diagram are available from the QSA website <www.qsa.qld.edu.au>.

The five processes can be used in any sequence, but all should be considered.

Five processes that guide planning



Source: QSA 2008, *Building Student Success: A guide to the Queensland Curriculum, Assessment and Reporting Framework*.

The units will be available to download from the QSA website <www.qsa.qld.edu.au>.

Year 4 Curriculum and assessment overview: Model B

	SOSE	Science	HPE	The Arts	Technology
Term 1			The activities and learnings for this KLA flow across the semester.		The activities and learning for this KLA start towards the end of term.
Inquiry topic	How do I get Sporty?	How does fingerprint forensics work?	How do I get Sporty?	How do I get Sporty?	Making sense of wild weather
Knowledge & understanding	<p>Time, continuity and change Changes and continuities are represented by events and people's contributions, and are viewed differently by different people.</p> <p>Political and economic systems Communities have developed decision-making systems that include principles and values formed over time.</p>	<p>Science as a human endeavour Science relates to students' own experiences and activities in the community.</p> <p>Natural and processed materials Properties, changes and uses of materials are related.</p>	<p>Health Health is multidimensional and influenced by individual and group actions and environments.</p> <p>Physical activity Fundamental and simple specialised movement skills are elements of physical activity.</p> <p>Personal development Personal identity, relationships and self-management are influenced by beliefs, behaviours and social factors, and shape personal development.</p>	<p>Visual art Visual art involves selecting visual arts elements, concepts, processes and forms (both 2D and 3D) to express ideas, considering different audiences and different purposes, through images and objects.</p>	<p>Technology as a human endeavour Technology influences and impacts on people, their communities and environments.</p> <p>Information material and systems The characteristics of resources are matched with tools and techniques to make products to meet design challenges.</p>
Ways of working	<ol style="list-style-type: none"> pose and refine... plan investigations... communicate and share... reflect on new learning... 	<ol style="list-style-type: none"> plan activities and... select and use tools... draw conclusions... communicate scientific findings... identify and apply safe... reflect on and identify... 	<ol style="list-style-type: none"> pose and refine... collect, organise... draw conclusions... propose and implement... apply fundamental... create and perform... apply personal... identify and apply safe... reflect on learning... 	<ol style="list-style-type: none"> select and develop ideas... create and shape... rehearse and rework... present arts works... identify and apply... reflect on learning... 	<ol style="list-style-type: none"> identify and analyse... generate design ideas... communicate the details... select resources... plan production procedures... make products to match... identify and apply safe...
Assessment	<p>Assessment evidence Investigation journal</p> <p>Assessable element K&U investigating communicating reflecting</p>	<p>Assessment evidence Modified fair test</p> <p>Assessable elements K&U investigating communicating reflecting</p>	<p>Assessment evidence Group work, skills profile, journal, peer and self-reflections</p> <p>Assessment focus K&U investigating implementing and applying reflecting</p>	<p>Assessment evidence Promotional flyer, skit, quiz</p> <p>Assessable elements K&U creating presenting reflecting</p>	<p>Assessment evidence Built prototype</p> <p>Assessable elements K&U investigating and designing producing</p>
Numeracy	Number; Patterns and algebra	Chance and data; Patterns and algebra	Number; Patterns and algebra	Not evident in this unit	Measurement
Literacy	Reading and viewing; Writing and designing	Writing and designing	Not evident in this unit	Writing and designing; Reading and viewing	Reading and viewing
ICT	Inquiring; Communicating; Operating	Creating; Communicating; Operating	Operating; Communicating; Creating; Ethic and issues	Creating; Communicating; Operating	Not evident in this unit
Modes	Database program, internet	Digital scopes, database program, internet	Digital systems and devices — stopwatches and GPS, database program graphs	Graphics program	Not evident in this unit
Term 2			The activities and learnings for this KLA flow across the semester.		
Inquiry topic	Making sense of wild weather	Making sense of wild weather		Making sense of wild weather	
Knowledge & understanding	<p>Place and space Environments are defined and changed by interactions between people and places.</p>	<p>Science as a human endeavour Science relates to students' own experiences and activities in the community.</p> <p>Life and living Living things have features that determine their interactions with the environment.</p>	↓	<p>Media Media involves selecting media languages and technologies to create representations and construct meaning, considering different audiences and different purposes.</p>	↓
Ways of working	<ol style="list-style-type: none"> pose and refine... plan investigations... evaluated sources of... draw and justify... communicate descriptions... 	<ol style="list-style-type: none"> collect and organise data... evaluate information and... select and use tools... draw conclusions that are supported... communicate scientific ideas... identify and apply safe... 		<ol style="list-style-type: none"> select and develop ideas... create and shape... present art works... 	
Assessment	<p>Assessment evidence Information report, research notes</p> <p>Assessable elements K&U investigating communicating</p>	<p>Assessment evidence Fair test, factual quiz</p> <p>Assessable elements K&U investigating communicating</p>		<p>Assessment evidence Weather safety poster, TV documentary</p> <p>Assessable elements K&U creating presenting</p>	
Numeracy	Not evident in this unit	Number; Measurement		Not evident in this unit	
Literacy	Reading and viewing; Writing and designing	Reading and viewing		Reading and viewing	
ICT	Inquiring; Creating; Communicating; Ethics and issues; Operating	Inquiring; Communicating; Operating		Communicating; Operating	
Modes	Presentation software, concept mapping software	Digital measuring devices, information searches, presentation of data in graphs		Movie software, digital capturing devices	

Year 4 Curriculum and assessment overview: Model B

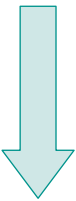
	SOSE	Science	HPE	The Arts	Technology
Term 3			The activities and learning for this KLA flow across the semester.		The activities and learning for this KLA flow across the semester.
Inquiry topic	What is my Australia?	What are Australian scientific inventions?	What is my Australia?	What is my Australia?	What is my Australia?
Knowledge & understanding	<p>Place and space Environments are defined and changed by interactions between people and places.</p> <p>Political and economic systems Communities have developed decision-making systems that include principles and values formed over time.</p>	<p>Science as a human endeavour Science relates to students' own experiences and activities in the community.</p> <p>Natural and processed materials Properties, changes and uses of materials are related.</p>	<p>Health Health is multidimensional and influenced by individual and group actions and environments.</p> <p>Physical activity Fundamental and simple specialised movement skills are elements of physical activity.</p> <p>Personal development Personal identity, relationships and self-management are influenced by beliefs, behaviours and social factors, and shape personal development.</p>	<p>Drama Drama involves selecting dramatic elements and conventions to express ideas, considering different audiences and different purposes, through dramatic action based on real or imagined events.</p>	<p>Technology as a human endeavour Technology influences and impacts on people, their communities and environments.</p> <p>Information material and systems The characteristics of resources are matched with tools and techniques to make products to meet design challenges.</p>
Ways of working	<ol style="list-style-type: none"> plan investigations... evaluated sources of... communicate and share... share opinions, identify... apply strategies to... reflect on and identify... 	<ol style="list-style-type: none"> pose and refine... evaluate information and... select and use tools... communicate scientific ideas... reflect on and identify different... 	<ol style="list-style-type: none"> pose and refine... collect, organise... draw conclusions... propose and implement... apply fundamental... create and perform... apply personal... identify and apply safe... reflect and identify... 	<ol style="list-style-type: none"> select and develop ideas... create and shape art... present art works... 	<ol style="list-style-type: none"> identify and analyse... generate design ideas... communicate the details... make products to match... reflect on learning...
Assessment	<p>Assessment evidence Compare/contrast report</p> <p>Assessable elements K&U investigating communicating participating reflecting</p>	<p>Assessment evidence Investigation report</p> <p>Assessable elements K&U investigating communicating reflecting</p>	<p>Assessment evidence Group planning, interpersonal reflective journal, oral presentation</p> <p>Assessable elements K&U investigating implementing and applying reflecting</p>	<p>Assessment evidence Group mime</p> <p>Assessable elements K&U creating presenting</p>	<p>Assessment evidence 3D timeline</p> <p>Assessable elements K&U investigating and designing producing reflecting</p>
Numeracy	Space	Not evident in this unit	Not evident in this unit	Not evident in this unit	Number; Measurement
Literacy	Speaking and listening; Writing and designing	Reading and viewing; Writing and designing	Speaking and listening	Speaking and listening	Reading and viewing; Writing and designing
ICT	Inquiring; Creating; Communicating; Ethics and issues; Operating	Inquiring; Creating; Communicating	Inquiring; Operating	Not evident in this unit	Creating; Communicating; Operating
Modes	Presentation programs, internet	Internet	Digital timers, scales and GPS software	Not evident in this unit	Concept mapping software
Term 4			The activities and learning for this KLA flow across the semester.		The activities and learning for this KLA flow across the semester.

Inquiry topic	Links with Asia	Properties of everyday objects		Links with Asia	
Knowledge & understanding	<p>Political and economic systems Communities have developed decision-making systems that include principles and values formed over time.</p> <p>Time, continuity and change Changes and continuities are represented by events and people's contributions, and are viewed differently by different people.</p>	<p>Science as a human endeavour Science relates to students' own experiences and activities in the community.</p> <p>Energy and change Actions of forces, and forms and uses of energy, are evident in the everyday world.</p> <p>Natural and processed materials Properties, changes and uses of materials are related.</p>	↓	<p>Dance Dance involves using the human body to express ideas, considering different audiences and different purposes, by selecting dance elements in short movement sequences.</p>	↓
Ways of working	<ol style="list-style-type: none"> plan investigations... evaluate sources of... communicate and share... share opinions, identify... 	<ol style="list-style-type: none"> pose and refine... plan activities and... select and use tools draw conclusions... communicate scientific ideas... identify and apply safe... reflect on and identify... 		<ol style="list-style-type: none"> select and develop ideas... create and shape art... rehearse and rework arts works... present art works... 	
Assessment	<p>Assessment evidence Investigation, web page report</p> <p>Assessable elements K&U investigating communicating</p>	<p>Assessment evidence Practical investigation, classification quiz</p> <p>Assessable elements K&U investigating communicating reflecting</p>		<p>Assessment evidence Dance</p> <p>Assessable elements K&U creating presenting performing</p>	
Numeracy	Number	Number; Measurement; Patterns and algebra		Not evident in this unit	
Literacy	Reading and viewing; Speaking and listening	Writing and designing		Speaking and listening	
ICT	Inquiring; Communicating; Ethics and issues; Operating	Creating; Communicating; Operating		Operating	
Modes	Web page software, concept mapping software, image capturing devices	Digital measuring devices		Video camera	

Year 5 Curriculum and assessment overview: Model B

	SOSE	Science	HPE	The Arts	Technology
Term 1			The activities and learning for this KLA flow across the semester.		
Inquiry topic	Australia's past: circa 1788	How are the Earth, solar system and universe dynamic systems?	Healthy lifestyles and choices	Australia's past: circa 1788	Australia's past: circa 1788
Knowledge & understanding	Time, continuity and change Changes and continuities are represented by events and people's contributions, and are viewed differently by different people. Place and space Environments are defined and changed by interactions between people and places. Culture and identity Communities contain cultures and groups that contribute to diversity and influence cohesion.	Science as a human endeavour Science relates to students' own experiences and activities in the community. Earth and beyond Changes and patterns in different environments and space have scientific explanations.	Health Health is multidimensional and influenced by individual and group actions and environments. Physical activity Fundamental and simple specialised movement skills are elements of physical activity. Personal development Personal identity, relationships and self-management are influenced by beliefs, behaviours and social factors, and shape personal development.	Drama Drama involves selecting dramatic elements and conventions to express ideas, considering different audiences and different purposes, through dramatic action based on real or imagined events. Visual art Visual art involves selecting visual arts elements, concepts, processes and forms (both 2D and 3D) to express ideas, considering different audiences and different purposes, through images and objects.	Technology as a human endeavour Technology influences and impacts on people, their communities and environments. Information material and systems The characteristics of resources are matched with tools and techniques to make products to meet design challenges.
Ways of working	1 pose and refine... 2 plan investigations... 3 collect and organise... 4 evaluate sources... 5 draw and justify... 6 communicate and share... 7 share opinions, identify... 9 reflect on and identify...	2 plan activities and... 3 collect and organise data... 4 evaluate information and... 6 draw conclusions... 7 communicate scientific ideas... 10 reflect on and identify...	1 pose and refine... 2 collect, organise... 3 draw conclusions... 4 propose and implement... 5 apply fundamental... 6 create and perform... 7 apply personal... 8 identify and apply safe... 9 reflect on and identify...	1 select and develop ideas... 2 create and shape arts... 3 rehearse and rework arts... 4 present arts works... 5 identify and apply safe practices... 6 respond to art works... 7 reflect on learning...	1 identify and analyse... 2 generate design ideas... 3 communicate the details... 4 select resources... 5 plan production procedures... 6 make products to match... 7 identify and apply safe... 8 evaluate products to... 10 reflect on learning...
Assessment	Assessment evidence Research report, graphic organiser Assessable elements K&U investigating participating communicating reflecting	Assessment evidence Teaching device, quiz Assessable elements K&U investigating communicating reflecting	Assessment evidence Group work, team sport skills, dietary investigation, fitness journal, reflection sheets Assessment focus K&U investigating implementing and applying reflecting	Assessment evidence Mime, art story creation Assessable elements K&U creating presenting reflecting	Assessment evidence Investigation, artefact production Assessable elements K&U investigating and designing producing evaluating reflecting
Numeracy	Not evident in this unit	Space; Patterns and algebra	Number; Patterns and algebra	Not evident in this unit	Measurement
Literacy	Speaking and listening; Writing and designing; Reading and viewing	Writing and designing	Writing and designing	Writing and designing; Speaking and listening; Reading and viewing	Reading and viewing
ICT	Inquiring; Communicating	Inquiring; Ethics and issues	Operating; Communicating; Creating; Ethic and issues	Creating; Communicating; Operating	
Modes	Concept mapping software, internet	Internet, concept mapping software	Digital systems and devices — stopwatches and GPS, database program graphs	Graphics program	

Term 2

			The activities and learning for this KLA flow across the semester.		
Inquiry topic	Water-wise program	Interactions between living and non-living things		Water-wise program	Water-wise program
Knowledge & understanding	Place and space Environments are defined and changed by interactions between people and places. Political and economic systems Communities have developed decision-making systems that include principles and values formed over time.	Science as a human endeavour Science relates to students' own experiences and activities in the community. Life and living Living things have features that determine their interactions with the environment.		Media Media involves selecting media languages and technologies to create representations and construct meaning, considering different audiences and different purposes.	Technology as a human endeavour Technology influences and impacts on people, their communities and environments. Information material and systems The characteristics of resources are matched with tools and techniques to make products to meet design challenges.
Ways of working	1 pose and refine... 2 plan investigations... 3 collect and organise... 5 draw and justify... 6 communicate and share... 7 share opinions, identify...	2 plan activities and... 3 collect and organise data... 5 select and use tools 6 draw conclusions... 7 communicate scientific ideas... 8 identify and apply safe...		1 select and develop ideas... 2 create and shape arts... 3 rehearse and rework arts... 4 present arts works...	1 identify and analyse... 2 generate design ideas... 3 communicate the details... 4 select resources... 5 plan production procedures... 6 make products to match...
Assessment	Assessment evidence Research report, mini quiz Assessable elements K&U investigating communicating participating	Assessment evidence Investigation report, experiment Assessable elements K&U investigating communicating		Assessment evidence Water-wise advertisement Assessable elements K&U creating presenting	Assessment evidence Board game, waterway diorama Assessable elements K&U investigating and designing producing
Numeracy	Number; Chance and data	Chance and data; Number		Space	Measuring; Number
Literacy	Writing and designing	Writing and designing; Reading and viewing		Writing and designing	Reading and viewing
ICT	Inquiring; Creating; Communicating; Ethics and issues	Inquiring; Communicating; Ethics and issues		Creating; Communicating; Operating	Creating; Communicating; Operating
Modes	Web quest, internet, concept mapping software	Internet, interactive whiteboard, interactive web learning		Drawing program, digital capture devices	Concept mapping software, Word processing software, Graphics software

Year 5 Curriculum and assessment overview: Model B

	SOSE	Science	HPE	The Arts	Technology
Term 3			The activities and learning for this KLA flow across the semester.	Activities for this KLA that started in Term 2 may run into Term 3.	The activities and learning for this KLA flow across the semester.
Inquiry topic	Disasters	Properties of materials before and after change (Fair test)	Avoiding health disasters	What is my Australia?	Disasters
Knowledge & understanding	<p>Place and space Environments are defined and changed by interactions between people and places.</p> <p>Political and economic systems Communities have developed decision-making systems that include principles and values formed over time.</p>	<p>Science as a human endeavour Science relates to students' own experiences and activities in the community.</p> <p>Natural and processed materials Properties, changes and uses of materials are related.</p>	<p>Health Health is multidimensional and influenced by individual and group actions and environments.</p> <p>Physical activity Fundamental and simple specialised movement skills are elements of physical activity.</p> <p>Personal development Personal identity, relationships and self-management are influenced by beliefs, behaviours and social factors, and shape personal development.</p>	<p>Drama Drama involves selecting dramatic elements and conventions to express ideas, considering different audiences and different purposes, through dramatic action based on real or imagined events.</p>	<p>Technology as a human endeavour Technology influences and impacts on people, their communities and environments.</p> <p>Information material and systems The characteristics of resources are matched with tools and techniques to make products to meet design challenges.</p>
Ways of working	<ol style="list-style-type: none"> plan investigations... collect and organise... evaluate sources of... draw and justify... apply strategies... reflect on new learning... 	<ol style="list-style-type: none"> pose and refine... plan activities and... collect and organise data... evaluate information and... select and use tools draw conclusions... communicate scientific ideas... reflect on and identify... 	<ol style="list-style-type: none"> pose and refine... collect, organise and evaluate information... draw conclusions and make decisions... propose and implement simple plans... apply fundamental and simple specialised movement skills... identify and apply safe practices... reflect on learning... 	<ol style="list-style-type: none"> select and develop ideas... create and shape art... present art works... 	<ol style="list-style-type: none"> identify and analyse... generate design ideas... communicate the details... select resources... plan production procedures... make products... identify and apply safe... reflect on learning...
Assessment	<p>Assessment evidence Multimedia report, research log</p> <p>Assessable elements K&U investigating participating reflecting</p>	<p>Assessment evidence Fair test, science journal</p> <p>Assessable elements K&U investigating communicating reflecting</p>	<p>Assessment evidence Group planning, fitness log, research paper, reflection journal</p> <p>Assessable elements K&U investigating implementing and applying reflecting</p>	<p>Assessment evidence Group mime</p> <p>Assessable elements K&U creating presenting</p>	<p>Assessment evidence Building prototype</p> <p>Assessable elements K&U investigating and designing producing reflecting</p>
Numeracy	Number; Chance and data	Measurement	Chance and data; Measurement; Number	Not evident in this unit	Measurement; Number
Literacy	Writing and designing; Reading and viewing	Writing and designing	Writing and designing; Reading and viewing	Speaking and listening	Not evident in this unit
ICT	Inquiring; Creating; Communicating; Ethics and issues	Inquiring; Communicating; Operating	Inquiring; Operating; Communicating; Ethics and issues	Not evident in this unit	Inquiring
Modes	Slide presentation/movie/web page, data projector, internet	Digital measuring devices, database program	Measuring devices — stopwatch, internet	Not evident in this unit	Internet

Term 4

	Democracy	Forms and sources of energy		Democracy	
Knowledge & understanding	<p>Time, continuity and change Changes and continuities are represented by events and people's contributions, and are viewed differently by different people.</p> <p>Culture and identity Communities contain cultures and groups that contribute to diversity and influence cohesion.</p> <p>Political and economic systems Communities have developed decision-making systems that include principles and values formed over time.</p>	<p>Science as a human endeavour Science relates to students' own experiences and activities in the community.</p> <p>Energy and change Actions of forces, and forms and uses of energy, are evident in the everyday world.</p>	↓	<p>Dance Dance involves using the human body to express ideas, considering different audiences and different purposes, by selecting dance elements in short movement sequences.</p> <p>Visual arts Visual art involves selecting visual arts elements, concepts, processes and forms (both 2D and 3D) to express ideas, considering different audiences and different purposes, through images and objects.</p>	↓
Ways of working	<ol style="list-style-type: none"> pose and refine... plan investigations... collect and organise... evaluate sources of ... draw and justify... communicate and share... share opinions, identify... apply strategies to... reflect on and... reflect on new learning... 	<ol style="list-style-type: none"> pose and refine... plan activities and investigation... collect and organise data... evaluate information and... select and use tools draw conclusions... communicate scientific ideas... draw conclusions... reflect on and identify... 		<ol style="list-style-type: none"> select and develop ideas... create and shape arts... rehearse and rework arts... present arts works... identify and apply safe practices... respond to art works... 	
Assessment	<p>Assessment evidence Report, oral presentation, factual recall task</p> <p>Assessable elements K&U investigating communicating investigating</p>	<p>Assessment evidence Scientific investigation, mini quiz</p> <p>Assessable elements K&U investigating communicating reflecting</p>		<p>Assessment evidence Mime, 3D collage</p> <p>Assessable elements K&U creating presenting responding</p>	
Numeracy	Not evident in this unit	Chance and data; Measurement		Reading and viewing	
Literacy	Writing and designing; Speaking and listening	Chance and data; Measurement; Writing and designing		Speaking and listening	
ICT	Creating; Communicating; Operating	Creating; Communicating; Operating			
Modes	Internet, web quest, data projector	Digital measuring devices, internet			